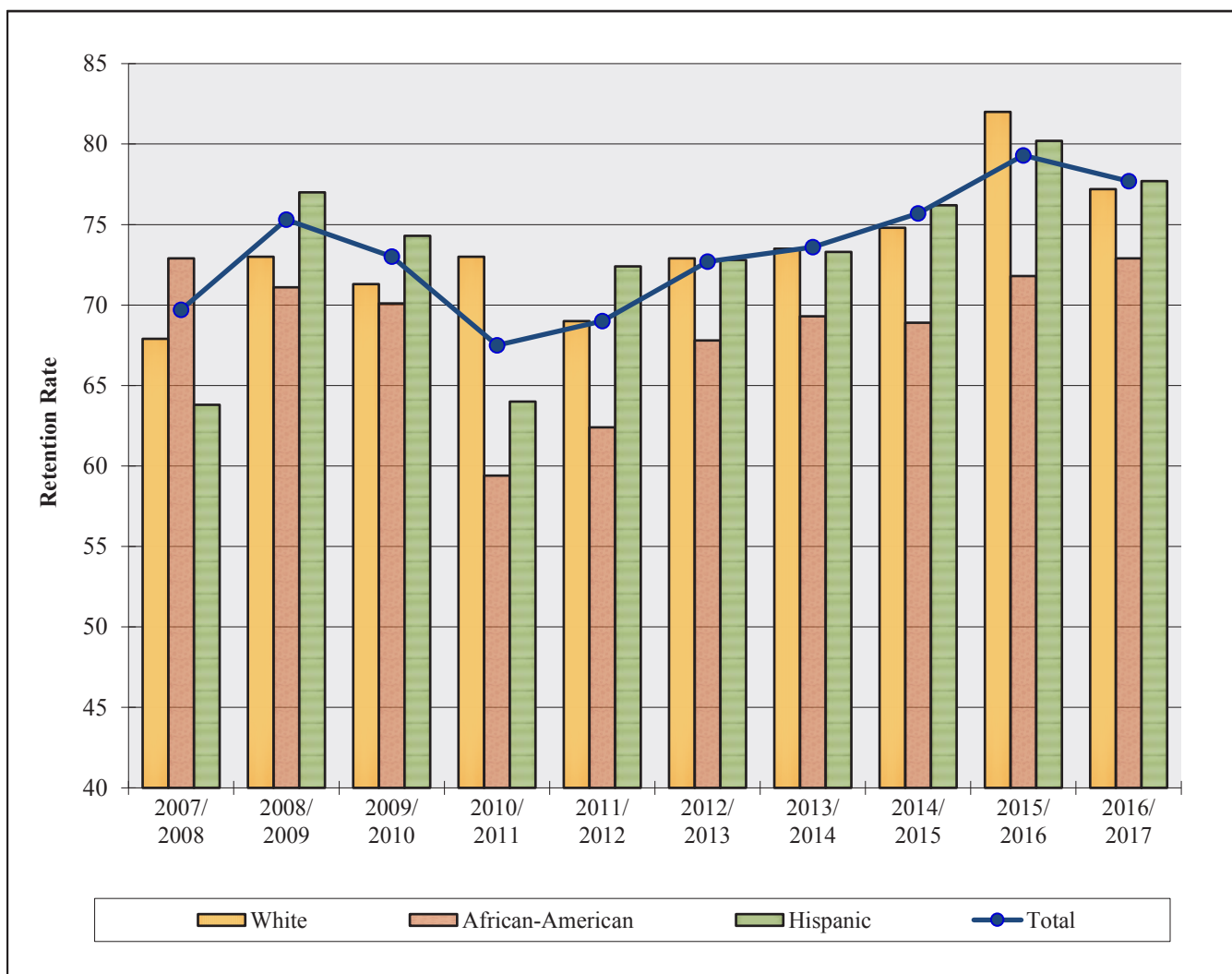


Table of Contents

Retention & Graduation.....	E-1
FTIC Freshmen One-year Retention Rates Chart Fall Semesters, 2007/2008 through 2016/2017	E-2
FTIC Freshmen Six-year Graduation Rates Chart Fall Semesters, 2002/2008 through 2011/2017	E-3
FTIC Freshmen Five-year Graduation Rates Chart Fall Semesters, 2003/2008 through 2012/2017	E-4
FTIC Freshmen Four-year Graduation Rates Chart Fall Semesters, 2004/2008 through 2013/2017	E-5
FTIC Freshmen Retention and Graduation Tables Fall 2009 through Fall 2011 Cohorts.....	E-6
Fall 2012 through Fall 2014 Cohorts.....	E-7
Fall 2015 through Fall 2017 Cohorts.....	E-8
FTIC Freshmen Six-Year Retention and Graduation Chart Fall Semester Total Cohorts, 2009 through 2011	E-9
Fall Semester Cohorts by Ethnicity, 2011	E-10
Transfer Students Four-year Graduation Rates Chart Fall Semesters, 2004/2008 through 2013/2017	E-11
Transfer Students Three-year Graduation Rates Chart Fall Semesters, 2005/2008 through 2014/2017	E-12
Transfer Students Two-year Graduation Rates Chart Fall Semesters, 2006/2008 through 2015/2017	E-13
Transfer Retention and Graduation Tables Fall 2012 through Fall 2014 Cohorts.....	E-14
Fall 2015 through Fall 2017 Cohorts.....	E-15
Transfer Four-Year Retention and Graduation Chart Fall Semester Total Cohorts, 2011 through 2013	E-16
Fall Semester Cohorts by Ethnicity, 2013	E-17
Master's Level New Admits Retention and Graduation Tables 2011-12 through 2013-14 Cohorts.....	E-18
2014-15 through 2016-17 Cohorts	E-19
Master's Level New Admits Four-Year Retention and Graduation Chart Total Cohorts, 2010-11 through 2012-13	E-20
Total Cohorts by Ethnicity, 2012-13.....	E-21

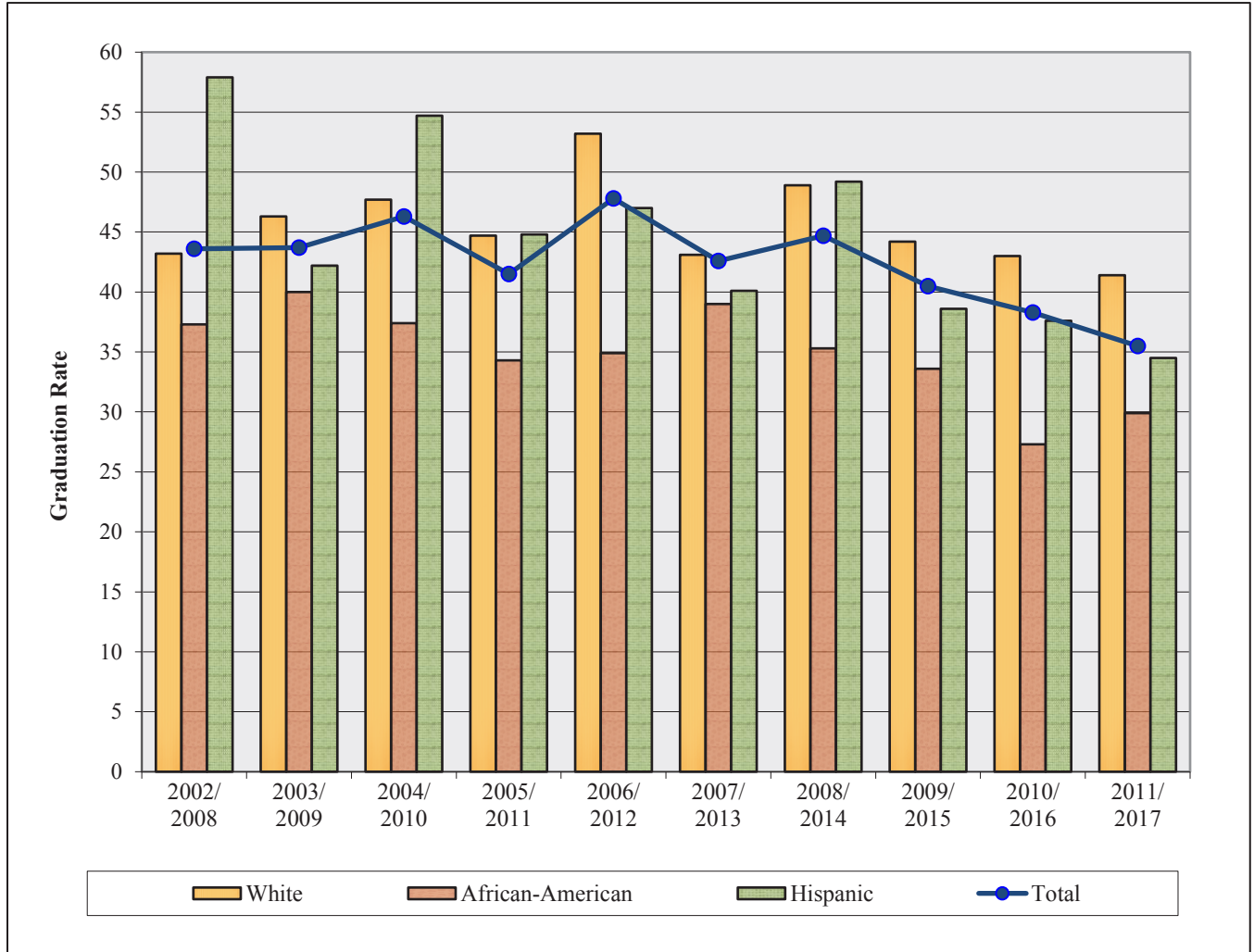
FTIC One-year Retention Rates Chart
Full-time Degree-seeking Freshmen by Ethnicity
Fall Semesters, 2007/2008 through 2016/2017



FTIC Freshmen One-year Retention											
Category		2007/ 2008	2008/ 2009	2009/ 2010	2010/ 2011	2011/ 2012	2012/ 2013	2013/ 2014	2014/ 2015	2015/ 2016	2016/ 2017
White	Cohort	299	282	251	256	261	343	337	322	290	325
	Rate	67.9	73.0	71.3	73.0	69.0	72.9	73.5	74.8	82.0	77.2
African-American	Cohort	210	218	211	271	335	301	298	275	274	277
	Rate	72.9	71.1	70.1	59.4	62.4	67.8	69.3	68.9	71.8	72.9
Hispanic	Cohort	177	183	171	303	330	389	374	387	435	507
	Rate	63.8	77.0	74.3	64.0	72.4	72.8	73.3	76.2	80.2	77.7
Total	Cohort	763	765	723	945	1,056	1,169	1,154	1,150	1,149	1,279
	Rate	69.7	75.3	73.0	67.5	69.0	72.7	73.6	75.7	79.3	77.7

Note: Cohort includes first-time-in-college, full-time, degree-seeking freshmen. Rate is defined as the number of students who graduated divided by the number of students in the initial cohort.

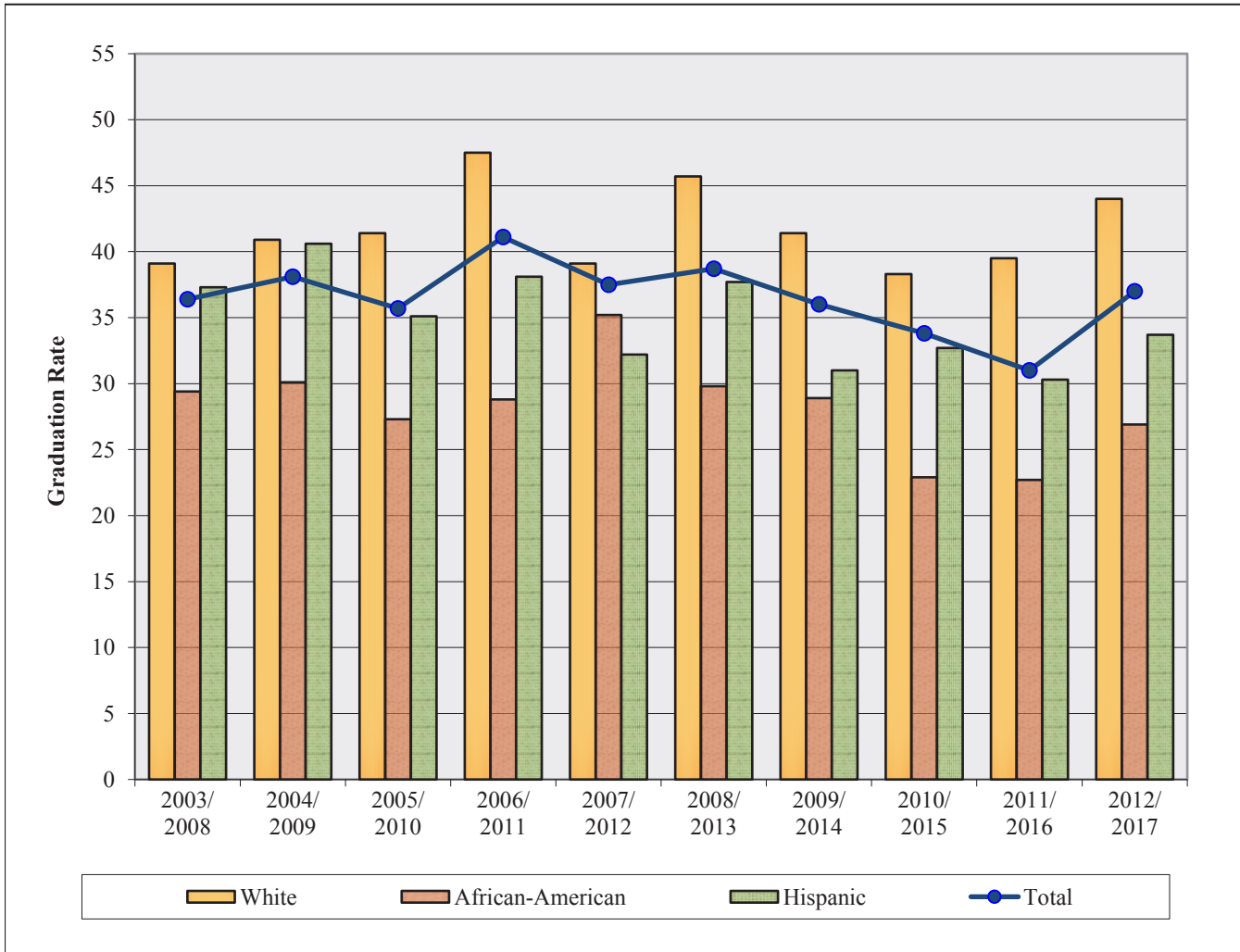
FTIC Six-year Graduation Rates Chart
Full-time Degree-seeking Freshmen by Ethnicity
Fall Semesters, 2002/2008 through 2011/2017



		Six-year Graduation									
Category		2002/ 2008	2003/ 2009	2004/ 2010	2005/ 2011	2006/ 2012	2007/ 2013	2008/ 2014	2009/ 2015	2010/ 2016	2011/ 2017
White	Cohort	241	281	281	295	316	299	282	251	256	261
	Rate	43.2	46.3	47.7	44.7	53.2	43.1	48.9	44.2	43.0	41.4
African-American	Cohort	158	160	163	198	215	210	218	211	271	335
	Rate	37.3	40.0	37.4	34.3	34.9	39.0	35.3	33.6	27.3	29.9
Hispanic	Cohort	76	102	128	134	168	177	183	171	303	330
	Rate	57.9	42.2	54.7	44.8	47.0	40.1	49.2	38.6	37.6	34.5
Total	Cohort	511	591	633	689	793	763	765	723	945	1,056
	Rate	43.6	43.7	46.3	41.5	47.8	42.6	44.7	40.5	38.3	35.5

Note: Cohort includes first-time-in-college, full-time, degree-seeking freshmen. Rate is defined as the number of students who graduated divided by the number of students in the initial cohort.

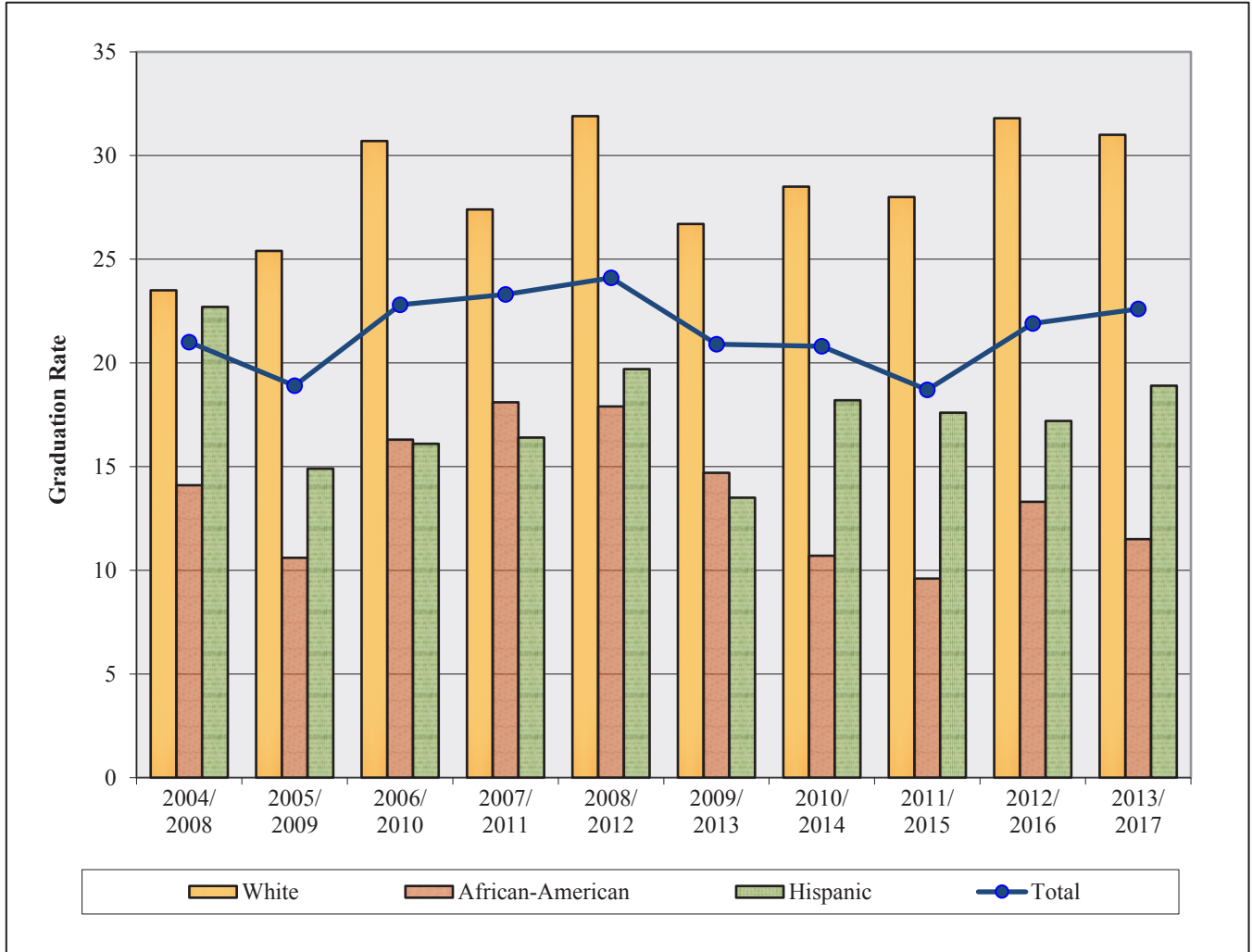
FTIC Five-year Graduation Rates Chart
Full-time Degree-seeking Freshmen by Ethnicity
Fall Semesters, 2003/2008 through 2012/2017



		Five-year Graduation									
Category		2003/ 2008	2004/ 2009	2005/ 2010	2006/ 2011	2007/ 2012	2008/ 2013	2009/ 2014	2010/ 2015	2011/ 2016	2012/ 2017
White	Cohort Rate	281 39.1	281 40.9	295 41.4	316 47.5	299 39.1	282 45.7	251 41.4	256 38.3	261 39.5	343 44.0
African-American	Cohort Rate	160 29.4	163 30.1	198 27.3	215 28.8	210 35.2	218 29.8	211 28.9	271 22.9	335 22.7	301 26.9
Hispanic	Cohort Rate	102 37.3	128 40.6	134 35.1	168 38.1	177 32.2	183 37.7	171 31.0	303 32.7	330 30.3	389 33.7
Total	Cohort Rate	591 36.4	633 38.1	689 35.7	793 41.1	763 37.5	765 38.7	723 36.0	945 33.8	1,056 31.0	1,169 37.0

Note: Cohort includes first-time-in-college, full-time, degree-seeking freshmen. Rate is defined as the number of students who graduated divided by the number of students in the initial cohort.

FTIC Four-year Graduation Rates Chart
Full-time Degree-seeking Freshmen by Ethnicity
Fall Semesters, 2004/2008 through 2013/2017



		Four-year Graduation									
Category		2004/ 2008	2005/ 2009	2006/ 2010	2007/ 2011	2008/ 2012	2009/ 2013	2010/ 2014	2011/ 2015	2012/ 2016	2013/ 2017
White	Cohort Rate	281 23.5	295 25.4	316 30.7	299 27.4	282 31.9	251 26.7	256 28.5	261 28.0	343 31.8	336 31.0
African-American	Cohort Rate	163 14.1	198 10.6	215 16.3	210 18.1	218 17.9	211 14.7	271 10.7	335 9.6	301 13.3	296 11.5
Hispanic	Cohort Rate	128 22.7	134 14.9	168 16.1	177 16.4	183 19.7	171 13.5	303 18.2	330 17.6	389 17.2	371 18.9
Total	Cohort Rate	633 21.0	689 18.9	793 22.8	763 23.3	765 24.1	723 20.9	945 20.8	1,056 18.7	1,169 21.9	1,154 22.6

Note: Cohort includes first-time-in-college, full-time, degree-seeking freshmen. Rate is defined as the number of students who graduated divided by the number of students in the initial cohort.

FTIC Retention and Graduation Tables
Full-time Degree-seeking Freshmen by Ethnicity
Fall 2009 through Fall 2011 Cohorts

<u>Fall 2009</u> Retention	Cohort <u>Base</u>	<u>After 1 yr.</u>		<u>After 2 yrs.</u>		<u>After 3 yrs.</u>		<u>After 4 yrs.</u>		<u>After 5 yrs.</u>		<u>After 6 yrs.</u>		<u>After 7 yrs.</u>	
		#	%	#	%	#	%	#	%	#	%	#	%	#	%
White	251	179	71.3	141	56.2	122	48.6	52	20.7	10	4.0	4	1.6	3	1.2
African-American	211	148	70.1	114	54.0	99	46.9	62	29.4	26	12.3	16	7.6	10	4.7
Hispanic	171	127	74.3	105	61.4	87	50.9	58	33.9	26	15.2	13	7.6	7	4.1
AS/PI	77	62	80.5	49	63.6	36	46.8	14	18.2	6	7.8	5	6.5	2	2.6
Int'l	5	5	100.0	4	80.0	4	80.0	0	0.0	0	0.0	0	0.0	0	0.0
Other	5	4	80.0	5	100.0	4	80.0	3	60.0	1	20.0	0	0.0	0	0.0
Total	723	528	73.0	421	58.2	354	49.0	189	26.1	69	9.5	38	5.3	22	3.0
Graduation															
White						4	1.6	67	26.7	104	41.4	111	44.2	113	45.0
African-American						3	1.4	31	14.7	61	28.9	71	33.6	75	35.5
Hispanic						1	0.6	23	13.5	53	31.0	66	38.6	75	43.9
AS/PI						3	3.9	23	29.9	32	41.6	34	44.2	37	48.1
Int'l						0	0.0	4	80.0	4	80.0	4	80.0	4	80.0
Other						0	0.0	1	20.0	4	80.0	5	100.0	5	100.0
Total						11	1.5	151	20.9	260	36.0	293	40.5	311	43.0
Fall 2010															
Retention	Cohort <u>Base</u>	<u>After 1 yr.</u>		<u>After 2 yrs.</u>		<u>After 3 yrs.</u>		<u>After 4 yrs.</u>		<u>After 5 yrs.</u>		<u>After 6 yrs.</u>		<u>After 7 yrs.</u>	
White	256	187	73.0	147	57.4	130	50.8	59	23.0	31	12.1	18	7.0	8	3.1
African-American	271	161	59.4	126	46.5	99	36.5	63	23.2	31	11.4	12	4.4	8	3.0
Hispanic	303	194	64.0	163	53.8	132	43.6	74	24.4	29	9.6	17	5.6	12	4.0
AS/PI	96	82	85.4	69	71.9	54	56.3	19	19.8	5	5.2	3	3.1	2	2.1
AI/AN	9	6	66.7	6	66.7	3	33.3	5	55.6	3	33.3	1	11.1	1	11.1
Int'l	6	5	83.3	5	83.3	6	100.0	3	50.0	0	0.0	0	0.0	0	0.0
Total	945	638	67.5	519	54.9	425	45.0	223	23.6	99	10.5	51	5.4	31	3.3
Graduation															
White						6	2.3	73	28.5	98	38.3	110	43.0	122	47.7
African-American						0	0.0	29	10.7	62	22.9	74	27.3	82	30.3
Hispanic						5	1.7	55	18.2	99	32.7	114	37.6	115	38.0
AS/PI						2	2.1	35	36.5	52	54.2	53	55.2	56	58.3
AI/AN						0	0.0	0	0.0	2	22.2	4	44.4	4	44.4
Int'l						0	0.0	3	50.0	4	66.7	5	83.3	5	83.3
Total						14	1.5	197	20.8	319	33.8	362	38.3	387	41.0
Fall 2011															
Retention	Cohort <u>Base</u>	<u>After 1 yr.</u>		<u>After 2 yrs.</u>		<u>After 3 yrs.</u>		<u>After 4 yrs.</u>		<u>After 5 yrs.</u>		<u>After 6 yrs.</u>			
White	261	180	69.0	145	55.6	115	44.1	42	16.1	15	5.7	15	5.7		
African-American	335	209	62.4	156	46.6	133	39.7	92	27.5	38	11.3	13	3.9		
Hispanic	330	239	72.4	182	55.2	144	43.6	82	24.8	30	9.1	18	5.5		
AS/PI	107	87	81.3	62	57.9	54	50.5	23	21.5	9	8.4	4	3.7		
AI/AN	13	10	76.9	9	69.2	6	46.2	2	15.4	0	0.0	0	0.0		
Int'l	5	4	80.0	3	60.0	1	20.0	0	0.0	0	0.0	0	0.0		
Total	1056	729	69.0	557	52.7	455	43.1	241	22.8	92	8.7	50	4.7		
Graduation															
White						6	2.3	73	28.0	103	39.5	108	41.4		
African-American						2	0.6	32	9.6	76	22.7	100	29.9		
Hispanic						2	0.6	58	17.6	100	30.3	114	34.5		
AS/PI						1	0.9	27	25.2	39	36.4	44	41.1		
AI/AN						1	0.9	5	38.5	7	53.8	7	53.8		
Int'l						1	20.0	2	40.0	2	40.0	2	40.0		
Total						13	1.2	197	18.7	327	31.0	375	35.5		

Note: FTIC denotes first-time-in-college.

**FTIC Retention and Graduation Tables
Full-time Degree-seeking Freshmen by Ethnicity
Fall 2012 through Fall 2014 Cohorts**

Fall 2012	Cohort	After 1 yr.		After 2 yrs.		After 3 yrs.		After 4 yrs.		After 5 yrs.	
		#	%	#	%	#	%	#	%	#	%
Retention	Base										
White	343	250	72.9	197	57.4	159	46.4	67	19.5	23	6.7
African-American	301	204	67.8	141	46.8	122	40.5	84	27.9	26	8.6
Hispanic	389	283	72.8	224	57.6	188	48.3	116	29.8	45	11.6
AS/PI	114	99	86.8	73	64.0	67	58.8	35	30.7	10	8.8
AI/AN	13	9	69.2	9	69.2	8	61.5	3	23.1	0	0.0
Other	6	3	50.0	2	33.3	2	33.3	1	16.7	0	0.0
Total	1169	850	72.7	648	55.4	547	46.8	307	26.3	104	8.9
Graduation											
White						17	5.0	109	31.8	151	44.0
African-American						7	2.3	40	13.3	81	26.9
Hispanic						9	2.3	67	17.2	131	33.7
AS/PI						6	5.3	35	30.7	58	50.9
AI/AN						0	0.0	4	30.8	7	53.8
Other						0	0.0	1	16.7	3	50.0
Total						39	3.3	256	21.9	432	37.0
Fall 2013	Cohort	After 1 yr.		After 2 yrs.		After 3 yrs.		After 4 yrs.			
Retention	Base	#	%	#	%	#	%	#	%		
White	336	247	73.5	200	59.5	178	53.0	73	21.7		
African-American	296	205	69.3	147	49.7	127	42.9	73	24.7		
Hispanic	371	272	73.3	216	58.2	193	52.0	105	28.3		
AS/PI	136	116	85.3	99	72.8	88	64.7	44	32.4		
AI/AN	9	4	44.4	3	33.3	3	33.3	0	0.0		
Other	3	3	100.0	3	100.0	2	66.7	1	33.3		
Total	1154	849	73.6	669	58.0	592	51.3	297	25.7		
Graduation											
White						8	2.4	104	31.0		
African-American						1	0.3	34	11.5		
Hispanic						7	1.9	70	18.9		
AS/PI						5	3.7	49	36.0		
AI/AN						0	0.0	2	22.2		
Other						0	0.0	1	33.3		
Total						21	1.8	261	22.6		
Fall 2014	Cohort	After 1 yr.		After 2 yrs.		After 3 yrs.					
Retention	Base	#	%	#	%	#	%				
White	326	244	74.8	214	65.6	190	58.3				
African-American	273	188	68.9	139	50.9	113	41.4				
Hispanic	383	292	76.2	234	61.1	204	53.3				
AS/PI	143	127	88.8	109	76.2	100	69.9				
AI/AN	17	13	76.5	9	52.9	6	35.3				
Int'l	3	2	66.7	2	66.7	2	66.7				
Total	1150	871	75.7	711	61.8	617	53.7				
Graduation											
White						15	4.6				
African-American						3	1.1				
Hispanic						8	2.1				
AS/PI						4	2.8				
AI/AN						1	0.7				
Int'l						1	33.3				
Total						32	2.8				

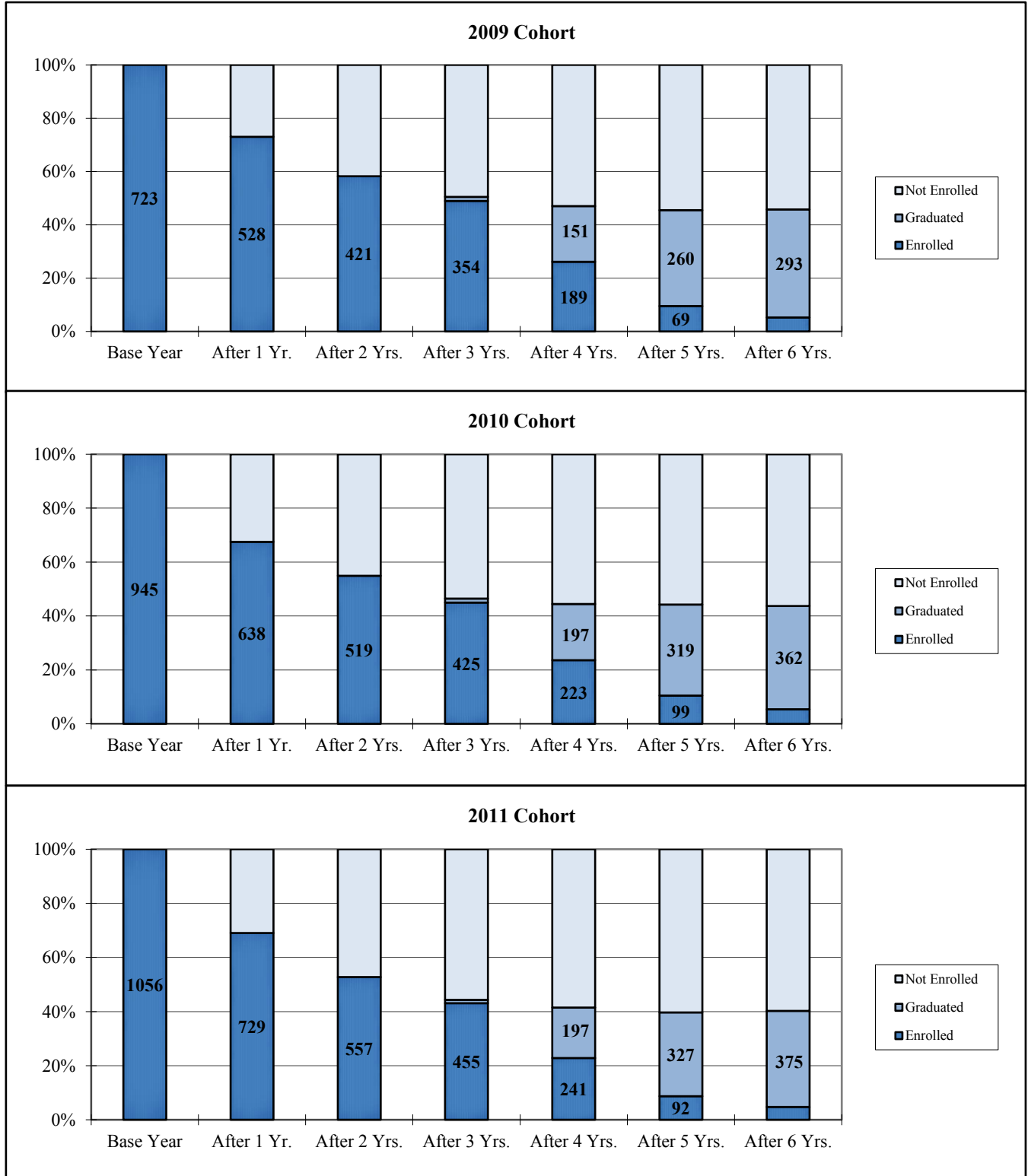
Note: FTIC denotes first-time-in-college.

FTIC Retention and Graduation Tables
Full-time Degree-seeking Freshmen by Ethnicity
Fall 2015 through Fall 2017 Cohorts

Fall 2015		Cohort Base	After 1 yr.		After 2 yrs.					
Retention			#	%	#	%				
White	294		241	82.0	201	68.4				
African-American	280		201	71.8	141	50.4				
Hispanic	440		353	80.2	278	63.2				
AS/PI	109		93	85.3	79	72.5				
AI/AN	12		11	91.7	7	58.3				
Other	8		6	75.0	6	75.0				
Total	1149		911	79.3	716	62.3				
Graduation										
White										
African-American										
Hispanic										
AS/PI										
AI/AN										
Other										
Total										
Fall 2016										
Retention		Cohort Base	After 1 yr.		After 2 yrs.					
			#	%	#	%				
White		325	251	77.2						
African-American		277	202	72.9						
Hispanic		507	394	77.7						
AS/PI		148	130	87.8						
AI/AN		12	8	66.7						
Other		5	5	100.0						
Total		1279	994	77.7						
Graduation										
White										
African-American										
Hispanic										
AS/PI										
AI/AN										
Other										
Total										
Fall 2017										
Retention		Cohort Base	After 1 yr.		After 2 yrs.					
			#	%	#	%				
White		361								
African-American		241								
Hispanic		513								
AS/PI		145								
AI/AN		13								
Int'l		3								
Total		1284								
Graduation										
White										
African-American										
Hispanic										
AS/PI										
AI/AN										
Int'l										
Total										

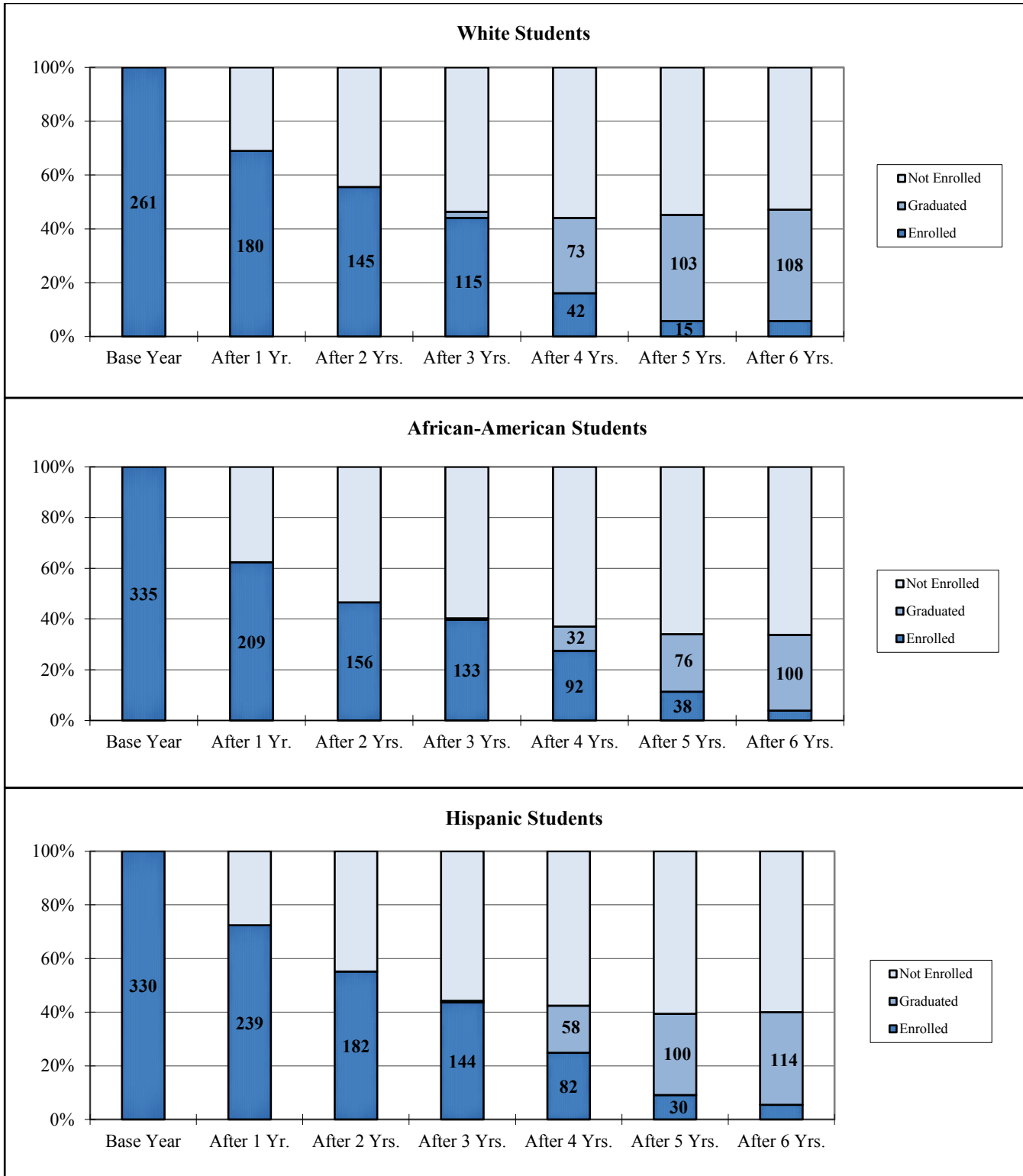
Note: FTIC denotes first-time-in-college.

FTIC Six-Year Retention and Graduation Chart
Full-time Degree-seeking Freshmen
Fall Semester Total Cohorts, 2009 through 2011



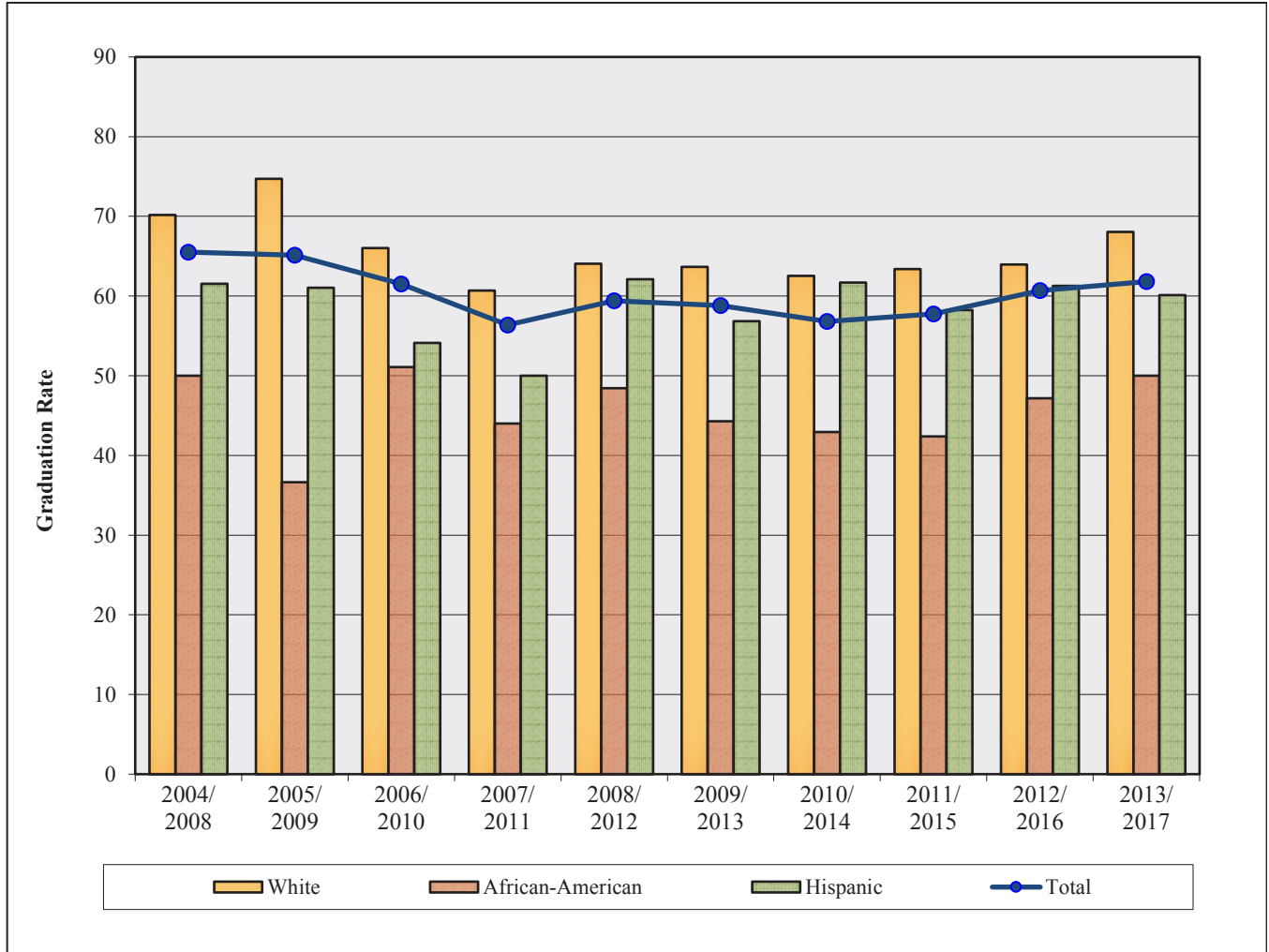
Note: FTIC denotes first-time-in-college.

FTIC Retention and Graduation Chart
Full-time Degree-seeking Freshmen
Fall Semester Cohorts by Ethnicity, 2011



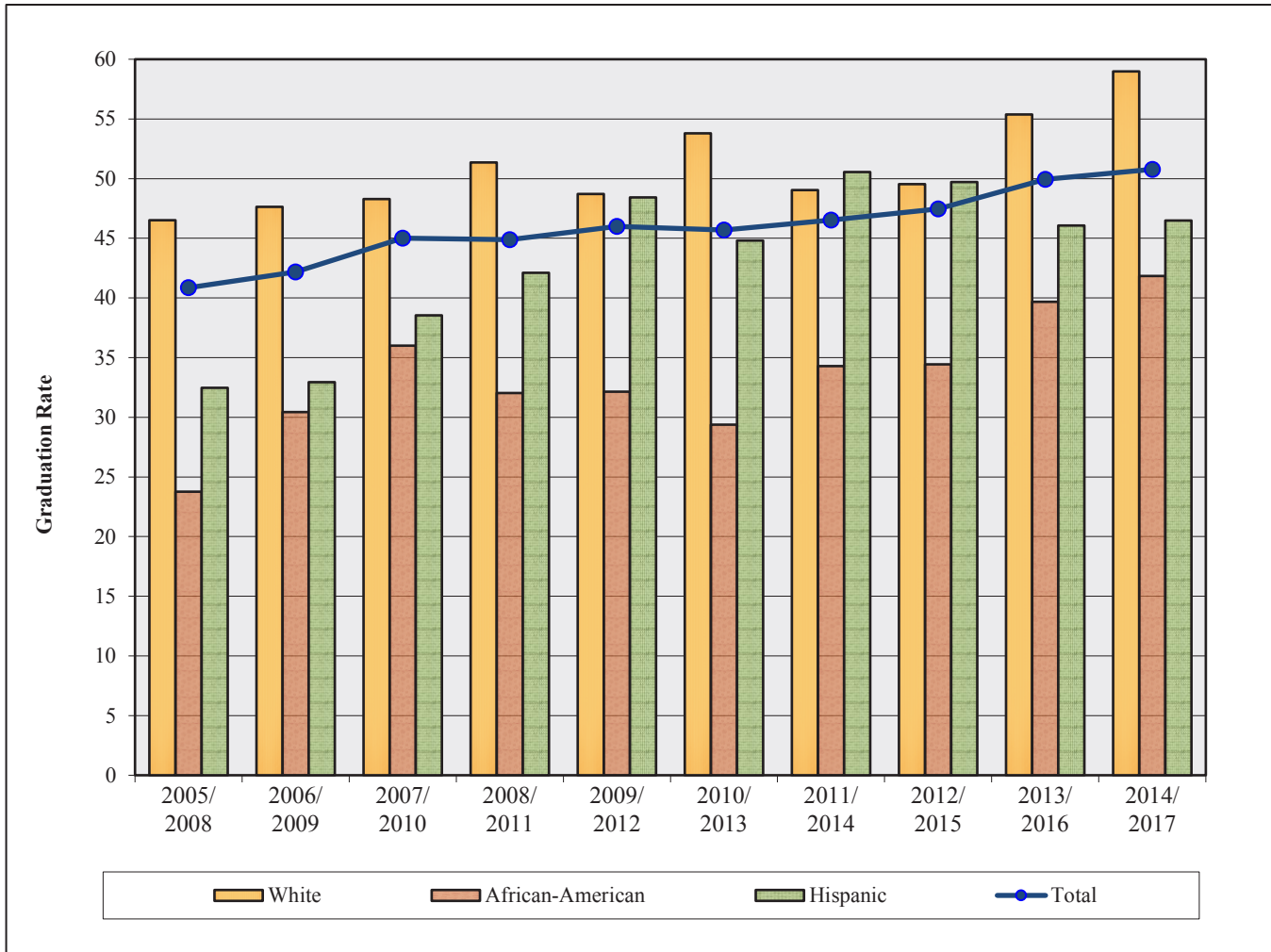
Note: FTIC denotes first-time-in-college.

**Transfer Four-year Graduation Rates Chart
Full-time Degree-seeking Undergraduates by Ethnicity
Fall Semesters, 2004/2008 through 2013/2017**



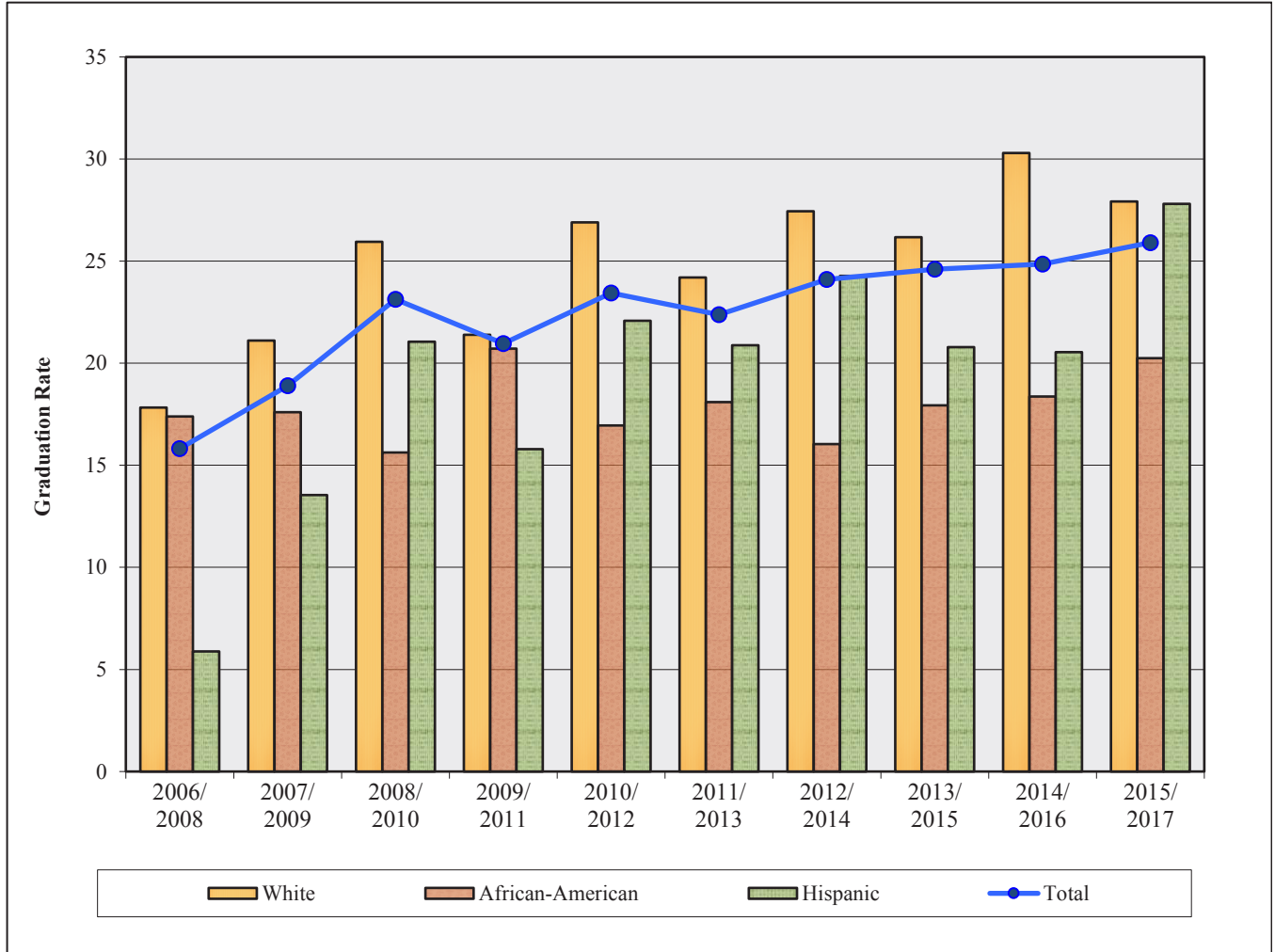
		Four-year Graduation									
Category		2004/ 2008	2005/ 2009	2006/ 2010	2007/ 2011	2008/ 2012	2009/ 2013	2010/ 2014	2011/ 2015	2012/ 2016	2013/ 2017
White	Cohort	352	344	359	379	370	388	435	467	430	363
	Rate	70.2	74.7	66.0	60.7	64.1	63.7	62.5	63.4	64.0	68.0
African-American	Cohort	100	101	92	125	128	140	177	210	212	184
	Rate	50.0	36.6	51.1	44.0	48.4	44.3	42.9	42.4	47.2	50.0
Hispanic	Cohort	78	77	85	96	95	95	154	182	173	178
	Rate	61.5	61.0	54.1	50.0	62.1	56.8	61.7	58.2	61.3	60.1
Total	Cohort	577	585	569	651	653	687	845	961	946	825
	Rate	65.5	65.1	61.5	56.4	59.4	58.8	56.8	57.8	60.7	61.8

Transfer Three-year Graduation Rates Chart
Full-time Degree-seeking Undergraduates by Ethnicity
Fall Semesters, 2005/2008 through 2014/2017



		Three-year Graduation									
Category		2005/ 2008	2006/ 2009	2007/ 2010	2008/ 2011	2009/ 2012	2010/ 2013	2011/ 2014	2012/ 2015	2013/ 2016	2014/ 2017
White	Cohort	344	359	379	370	388	435	467	430	363	373
	Rate	46.5	47.6	48.3	51.4	48.7	53.8	49.0	49.5	55.4	59.0
African-American	Cohort	101	92	125	128	140	177	210	212	184	196
	Rate	23.8	30.4	36.0	32.0	32.1	29.4	34.3	34.4	39.7	41.8
Hispanic	Cohort	77	85	96	95	95	154	182	173	178	185
	Rate	32.5	32.9	38.5	42.1	48.4	44.8	50.5	49.7	46.1	46.5
Total	Cohort	585	569	651	653	687	845	961	946	825	837
	Rate	40.9	42.2	45.0	44.9	46.0	45.7	46.5	47.5	49.9	50.8

Transfer Two-year Graduation Rates Chart
Full-time Degree-seeking Undergraduates by Ethnicity
Fall Semesters, 2006/2008 through 2015/2017



		Two-year Graduation									
Category		2006/ 2008	2007/ 2009	2008/ 2010	2009/ 2011	2010/ 2012	2011/ 2013	2012/ 2014	2013/ 2015	2014/ 2016	2015/ 2017
White	Cohort Rate	359 17.8	379 21.1	370 25.9	388 21.4	435 26.9	467 24.2	430 27.4	363 26.2	373 30.3	351 27.9
African-American	Cohort Rate	92 17.4	125 17.6	128 15.6	140 20.7	177 16.9	210 18.1	212 16.0	184 17.9	196 18.4	163 20.2
Hispanic	Cohort Rate	85 5.9	96 13.5	95 21.1	95 15.8	154 22.1	182 20.9	173 24.3	178 20.8	185 20.5	205 27.8
Total	Cohort Rate	569 15.8	651 18.9	653 23.1	687 21.0	845 23.4	961 22.4	946 24.1	825 24.6	837 24.9	799 25.9

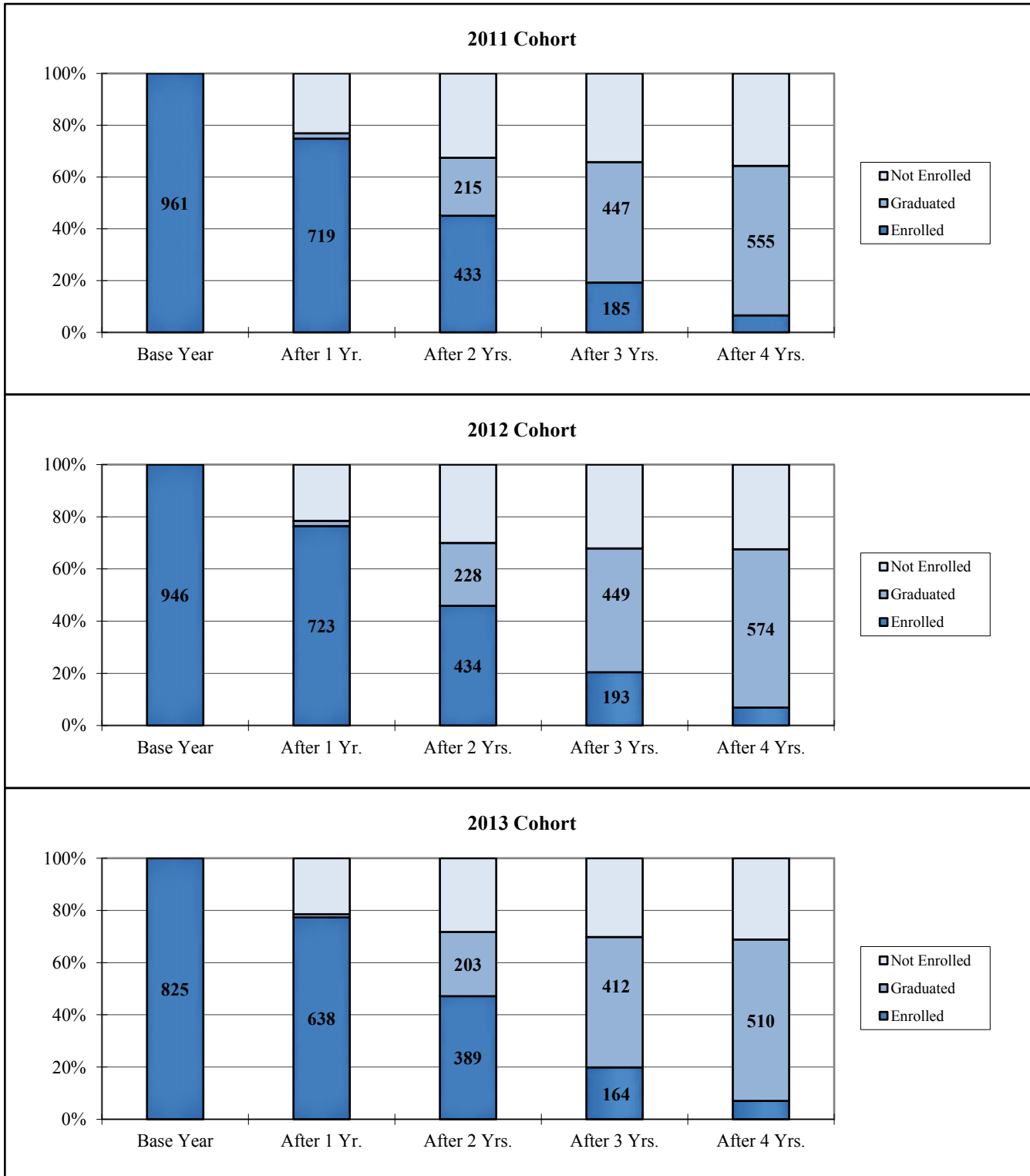
Transfer Retention and Graduation Tables
Full-time Degree-seeking Undergraduates by Ethnicity
Fall 2012 through Fall 2014 Cohorts

Fall 2012	Cohort Base	After 1 yr.		After 2 yrs.		After 3 yrs.		After 4 yrs.		After 5 yrs.	
		#	%	#	%	#	%	#	%	#	%
Retention											
White	430	337	78.4	190	44.2	87	20.2	19	4.4	7	1.6
African-American	212	159	75.0	107	50.5	57	26.9	25	11.8	14	6.6
Hispanic	173	128	74.0	77	44.5	32	18.5	12	6.9	3	1.7
AS/PI	75	56	74.7	38	50.7	13	17.3	5	6.7	2	2.7
AI/AN	17	11	64.7	10	58.8	4	23.5	2	11.8	1	5.9
Int'l	35	31	88.6	11	31.4	2	5.7	1	2.9	1	2.9
Other	4	3	75.0	2	50.0	0	0.0	1	25.0	0	0.0
Total	946	725	76.6	435	46.0	195	20.6	65	6.9	28	3.0
Graduation											
White		9	2.1	118	27.4	213	49.5	275	64.0	293	68.1
African-American		4	1.9	34	16.0	73	34.4	100	47.2	110	51.9
Hispanic		4	2.3	42	24.3	86	49.7	106	61.3	115	66.5
AS/PI		1	1.3	18	24.0	44	58.7	53	70.7	54	72.0
AI/AN		0	0.0	0	0.0	5	29.4	8	47.1	10	58.8
Int'l		1	2.9	16	45.7	26	74.3	30	85.7	30	85.7
Other		0	0.0	0	0.0	2	50.0	2	50.0	2	50.0
Total		19	2.0	228	24.1	449	47.5	574	60.7	614	64.9
Fall 2013	Cohort Base	After 1 yr.		After 2 yrs.		After 3 yrs.		After 4 yrs.			
Retention		#	%	#	%	#	%	#	%		
White	363	294	81.0	178	49.0	66	18.2	25	6.9		
African-American	184	131	71.2	85	46.2	40	21.7	16	8.7		
Hispanic	178	136	76.4	92	51.7	39	21.9	11	6.2		
AS/PI	57	43	75.4	23	40.4	13	22.8	5	8.8		
AI/AN	12	9	75.0	6	50.0	5	41.7	1	8.3		
Int'l	20	17	85.0	4	20.0	1	5.0	0	0.0		
Other	11	8	72.7	1	9.1	0	0.0	0	0.0		
Total	825	638	77.3	389	47.2	164	19.9	58	7.0		
Graduation											
White		6	1.7	95	26.2	201	55.4	247	68.0		
African-American		2	1.1	33	17.9	73	39.7	92	50.0		
Hispanic		1	0.6	37	20.8	82	46.1	107	60.1		
AS/PI		0	0.0	16	28.1	28	49.1	33	57.9		
AI/AN		0	0.0	3	25.0	4	33.3	7	58.3		
Int'l		0	0.0	13	65.0	16	80.0	16	80.0		
Other		1	9.1	6	54.5	8	72.7	8	72.7		
Total		10	1.2	203	24.6	412	49.9	510	61.8		
Fall 2014	Cohort Base	After 1 yr.		After 2 yrs.		After 3 yrs.					
Retention		#	%	#	%	#	%				
White	373	295	79.1	169	45.3	52	13.9				
African-American	196	144	73.5	88	44.9	35	17.9				
Hispanic	185	145	78.4	93	50.3	43	23.2				
AS/PI	47	35	74.5	25	53.2	12	25.5				
AI/AN	12	11	91.7	8	66.7	2	16.7				
Int'l	21	18	85.7	8	38.1	4	19.0				
Total	837	656	78.4	392	46.8	149	17.8				
Graduation											
White		14	3.8	113	30.3	220	59.0				
African-American		0	0.0	36	18.4	82	41.8				
Hispanic		1	0.5	38	20.5	86	46.5				
AS/PI		1	2.1	11	23.4	17	36.2				
AI/AN		0	0.0	1	8.3	7	58.3				
Int'l		0	0.0	9	42.9	13	61.9				
Total		16	1.9	208	24.9	425	50.8				

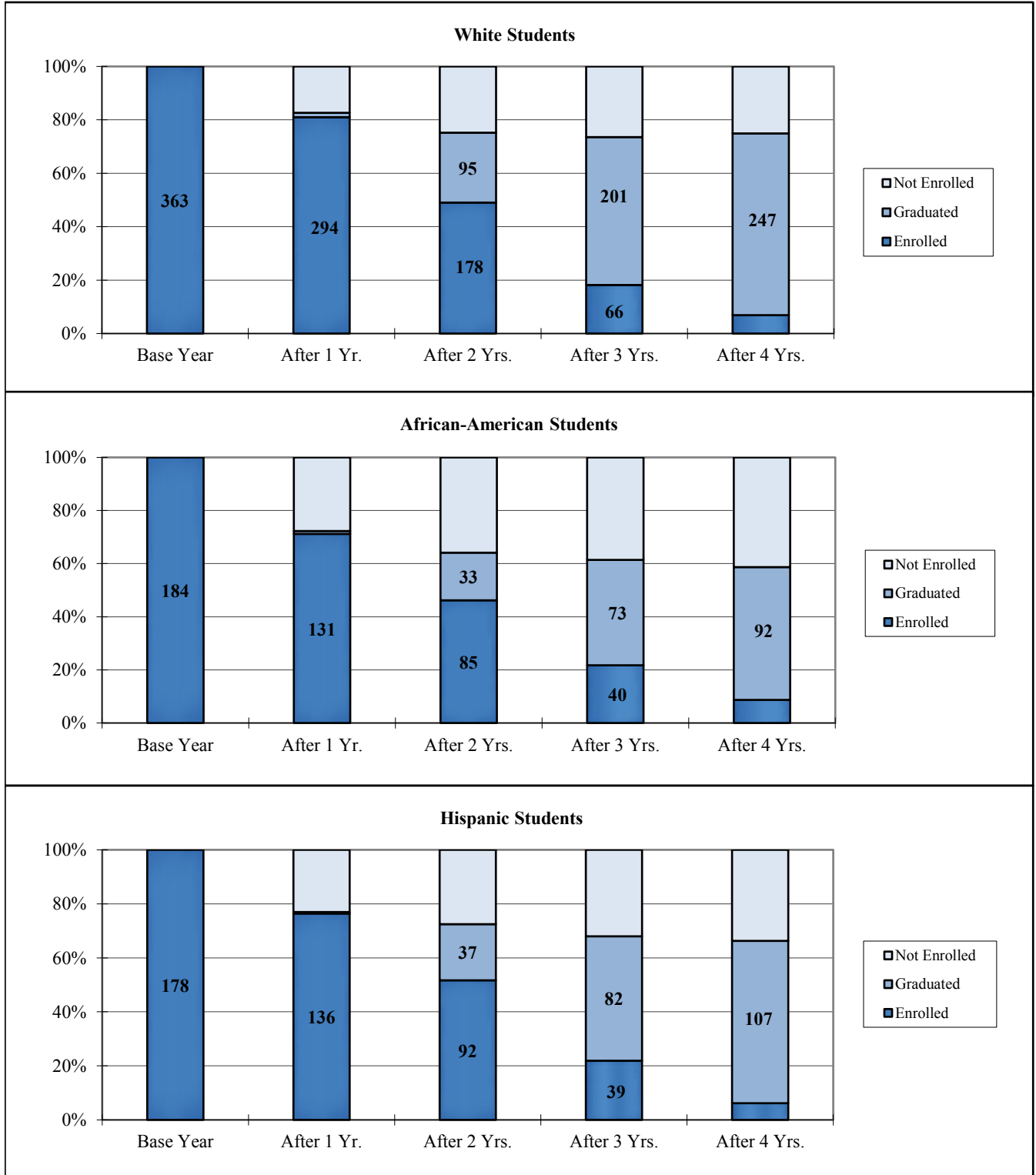
**Transfer Retention and Graduation Tables
Full-time Degree-seeking Transfers by Ethnicity
Fall 2015 through Fall 2017 Cohorts**

Fall 2015	Cohort	After 1 yr.		After 2 yrs.				
		#	%	#	%			
Retention	Base							
White	351	281	80.1	158	45.0			
African-American	163	120	73.6	60	36.8			
Hispanic	205	167	81.5	89	43.4			
AS/PI	57	45	78.9	22	38.6			
AI/AN	8	7	87.5	6	75.0			
Int'l	9	6	66.7	4	44.4			
Other	6	4	66.7	5	83.3			
Total	799	630	78.8	344	43.1			
Graduation								
White		8	2.3	98	27.9			
African-American		3	1.8	33	20.2			
Hispanic		4	2.0	57	27.8			
AS/PI		1	1.8	16	28.1			
AI/AN		0	0.0	1	12.5			
Int'l		0	0.0	2	22.2			
Other		0	0.0	0	0.0			
Total		16	2.0	207	25.9			
Fall 2016	Cohort	After 1 yr.		After 2 yrs.				
Retention	Base	#	%	#	%			
White	354	258	72.9					
African-American	175	123	70.3					
Hispanic	217	164	75.6					
AS/PI	68	54	79.4					
AI/AN	9	6	66.7					
Int'l	11	10	90.9					
Other	5	3	60.0					
Total	839	618	73.7					
Graduation								
White		9	2.5					
African-American		1	0.6					
Hispanic		3	1.4					
AS/PI		2	2.9					
AI/AN		0	0.0					
Int'l		0	0.0					
Other		0	0.0					
Total		15	1.8					
Fall 2017	Cohort							
Retention	Base							
White	316							
African-American	179							
Hispanic	205							
AS/PI	52							
AI/AN	10							
Int'l	24							
Total	794							
Graduation								
White								
African-American								
Hispanic								
AS/PI								
AI/AN								
Int'l								
Total								

Transfer Four-Year Retention and Graduation Chart
Full-time Degree-seeking Undergraduates
Fall Semester Total Cohorts, 2011 through 2013



**Transfer Four-Year Retention and Graduation Chart
Full-time Degree-seeking Undergraduates
Fall Semester Cohorts by Ethnicity, 2013**



New Admits Retention and Graduation Tables
Degree-seeking Master's Level Students by Ethnicity
2011-12 through 2013-14 Cohorts

2011-12		Cohort		After 1 yr.		After 2 yrs.		After 3 yrs.		After 4 yrs.		After 5 yrs.	
Retention	Base	#	%	#	%	#	%	#	%	#	%	#	%
White	916	513	56.0	168	18.3	45	4.9	24	2.6	13	1.4		
African-American	519	192	37.0	60	11.6	21	4.0	14	2.7	11	2.1		
Hispanic	220	130	59.1	39	17.7	14	6.4	7	3.2	5	2.3		
AS/PI	205	119	58.0	40	19.5	14	6.8	8	3.9	3	1.5		
AI/AN	24	14	58.3	3	12.5	0	0.0	0	0.0	0	0.0		
Int'l	55	26	47.3	7	12.7	5	9.1	3	5.5	1	1.8		
Total	1,952	999	51.2	319	16.3	99	5.1	56	2.9	33	1.7		
Graduation													
White		218	23.8	564	61.6	681	74.3	706	77.1	717	78.3		
African-American		206	39.7	334	64.4	370	71.3	376	72.4	380	73.2		
Hispanic		57	25.9	146	66.4	173	78.6	181	82.3	184	83.6		
AS/PI		45	22.0	125	61.0	149	72.7	155	75.6	160	78.0		
AI/AN		6	25.0	18	75.0	21	87.5	21	87.5	21	87.5		
Int'l		16	29.1	36	65.5	38	69.1	42	76.4	43	78.2		
Total		554	28.4	1,232	63.1	1,442	73.9	1,492	76.4	1,516	77.7		
2012-13		Cohort		After 1 yr.		After 2 yrs.		After 3 yrs.		After 4 yrs.			
Retention	Base	#	%	#	%	#	%	#	%	#	%	#	%
White	957	576	60.2	161	16.8	59	6.2	16	1.7				
African-American	466	178	38.2	55	11.8	20	4.3	14	3.0				
Hispanic	259	162	62.5	43	16.6	17	6.6	6	2.3				
AS/PI	179	116	64.8	38	21.2	12	6.7	4	2.2				
AI/AN	28	12	42.9	2	7.1	0	0.0	1	3.6				
Int'l	52	26	50.0	10	19.2	3	5.8	0	0.0				
Other	20	17	85.0	3	15.0	1	5.0	0	0.0				
Total	1,961	1,087	55.4	312	15.9	112	5.7	41	2.1				
Graduation													
White		198	20.7	597	62.4	699	73.0	743	77.6				
African-American		169	36.3	287	61.6	326	70.0	333	71.5				
Hispanic		60	23.2	175	67.6	202	78.0	218	84.2				
AS/PI		41	22.9	114	63.7	140	78.2	151	84.4				
AI/AN		7	25.0	14	50.0	17	60.7	17	60.7				
Int'l		15	28.8	32	61.5	39	75.0	41	78.8				
Other		2	10.0	16	80.0	17	85.0	18	90.0				
Total		492	25.1	1,235	63.0	1,440	73.4	1,521	77.6				
2013-14		Cohort		After 1 yr.		After 2 yrs.		After 3 yrs.					
Retention	Base	#	%	#	%	#	%	#	%	#	%	#	%
White	774	442	57.1	144	18.6	47	6.1						
African-American	392	181	46.2	52	13.3	17	4.3						
Hispanic	231	133	57.6	50	21.6	18	7.8						
AS/PI	200	142	71.0	53	26.5	21	10.5						
Int'l	42	23	54.8	12	28.6	2	4.8						
Other	16	9	56.3	2	12.5	0	0.0						
Total	1,661	933	56.2	315	19.0	107	6.4						
Graduation													
White		179	23.1	469	60.6	565	73.0						
African-American		112	28.6	230	58.7	272	69.4						
Hispanic		57	24.7	138	59.7	169	73.2						
AS/PI		31	15.5	115	57.5	146	73.0						
Int'l		7	16.7	21	50.0	29	69.0						
Other		2	12.5	8	50.0	10	62.5						
Total		390	23.5	984	59.2	1,194	71.9						

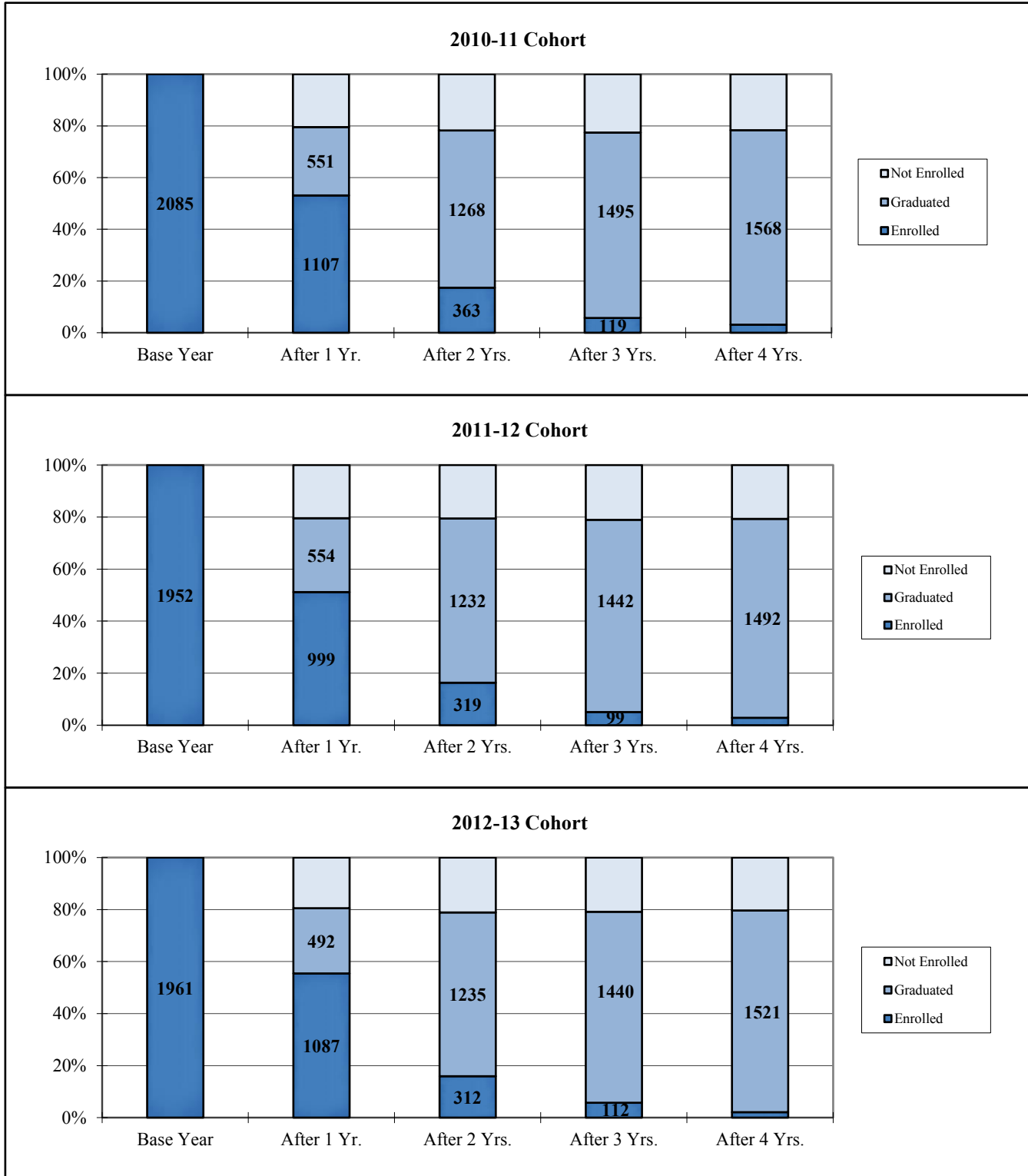
The cohort includes all degree-seeking masters level students who are newly admitted into a program during the academic year.

New Admits Retention and Graduation Tables
 Degree-seeking Master's Level Students by Ethnicity
 2014-15 through 2016-17 Cohorts

2014-15		Cohort Base	After 1 yr.		After 2 yrs.				
Retention	#		%	#	%				
White	779	485	62.3	127	16.3				
African-American	372	174	46.8	64	17.2				
Hispanic	240	147	61.3	35	14.6				
AS/PI	196	138	70.4	45	23.0				
AI/AN	24	16	66.7	6	25.0				
Int'l	68	39	57.4	13	19.1				
Other	24	16	66.7	7	29.2				
Total	1,703	1,015	59.6	297	17.4				
Graduation									
White		164	21.1	500	64.2				
African-American		101	27.2	198	53.2				
Hispanic		40	16.7	142	59.2				
AS/PI		28	14.3	105	53.6				
AI/AN		2	8.3	11	45.8				
Int'l		17	25.0	43	63.2				
Other		0	0.0	8	33.3				
Total		352	20.7	1,007	59.1				
2015-16		Cohort Base	After 1 yr.						
Retention	#		%						
White	773	449	58.1						
African-American	366	191	52.2						
Hispanic	275	156	56.7						
AS/PI	180	135	75.0						
Int'l	41	16	39.0						
Other	31	19	61.3						
Total	1,682	973	57.8						
Graduation									
White		168	21.7						
African-American		88	24.0						
Hispanic		50	18.2						
AS/PI		28	15.6						
Int'l		6	14.6						
Other		4	12.9						
Total		347	20.6						
2016-17		Cohort Base							
Retention									
White	802								
African-American	282								
Hispanic	278								
AS/PI	176								
Int'l	43								
Other	23								
Total	1,618								
Graduation									
White									
African-American									
Hispanic									
AS/PI									
Int'l									
Other									
Total									

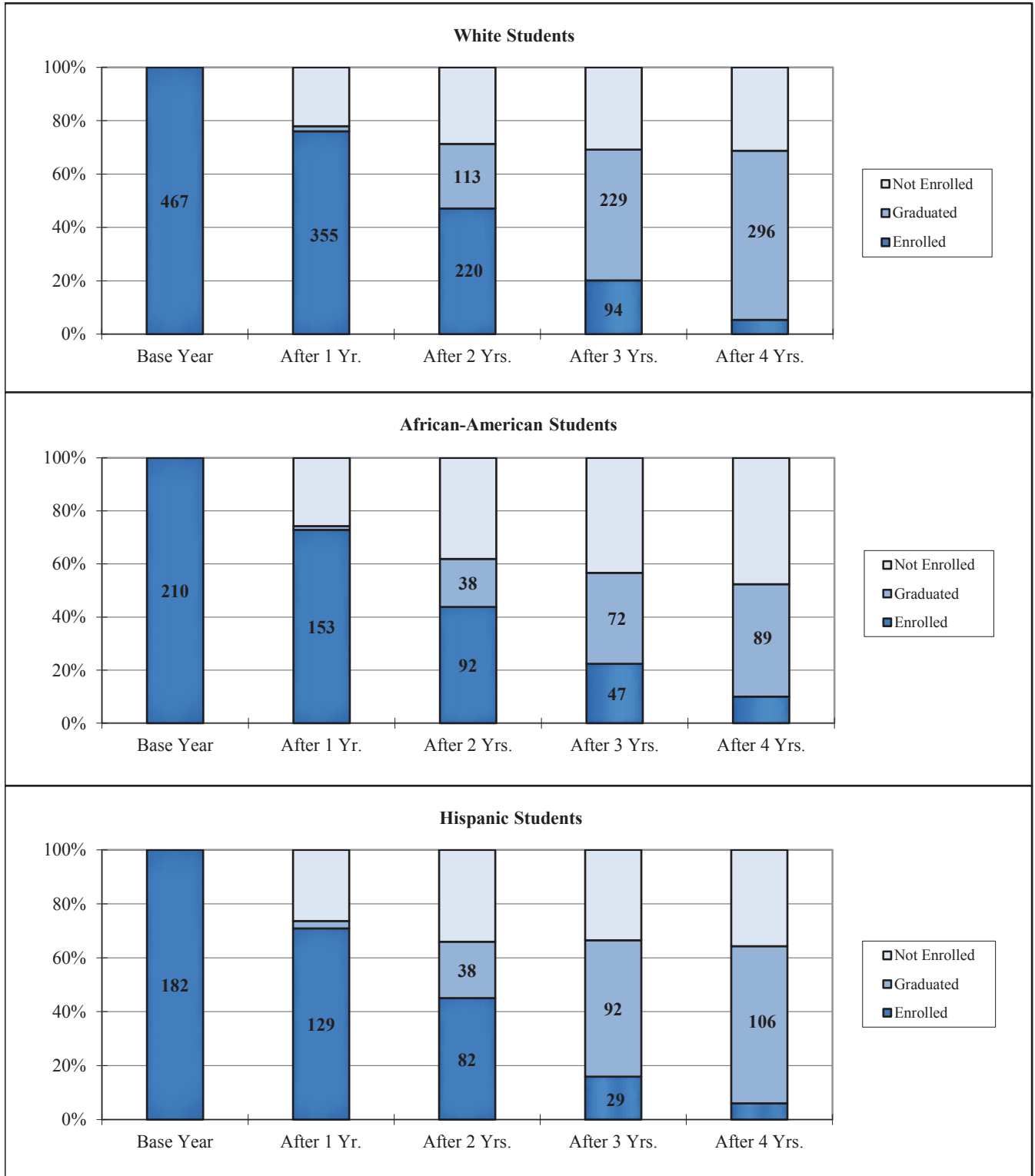
The cohort includes all degree-seeking masters level students who are newly admitted into a program during the academic year.

**New Admit Four-Year Retention and Graduation Chart
Degree-seeking Master's Level Students
Total Cohorts, 2010-11 through 2012-13**



The cohort includes all degree-seeking masters level students who are newly admitted into a program during the academic year.

**New Admit Four-Year Retention and Graduation Chart
Degree-seeking Master's Level Students
Total Cohorts by Ethnicity, 2012-13**



The cohort includes all degree-seeking masters level students who are newly admitted into a program during the academic year.