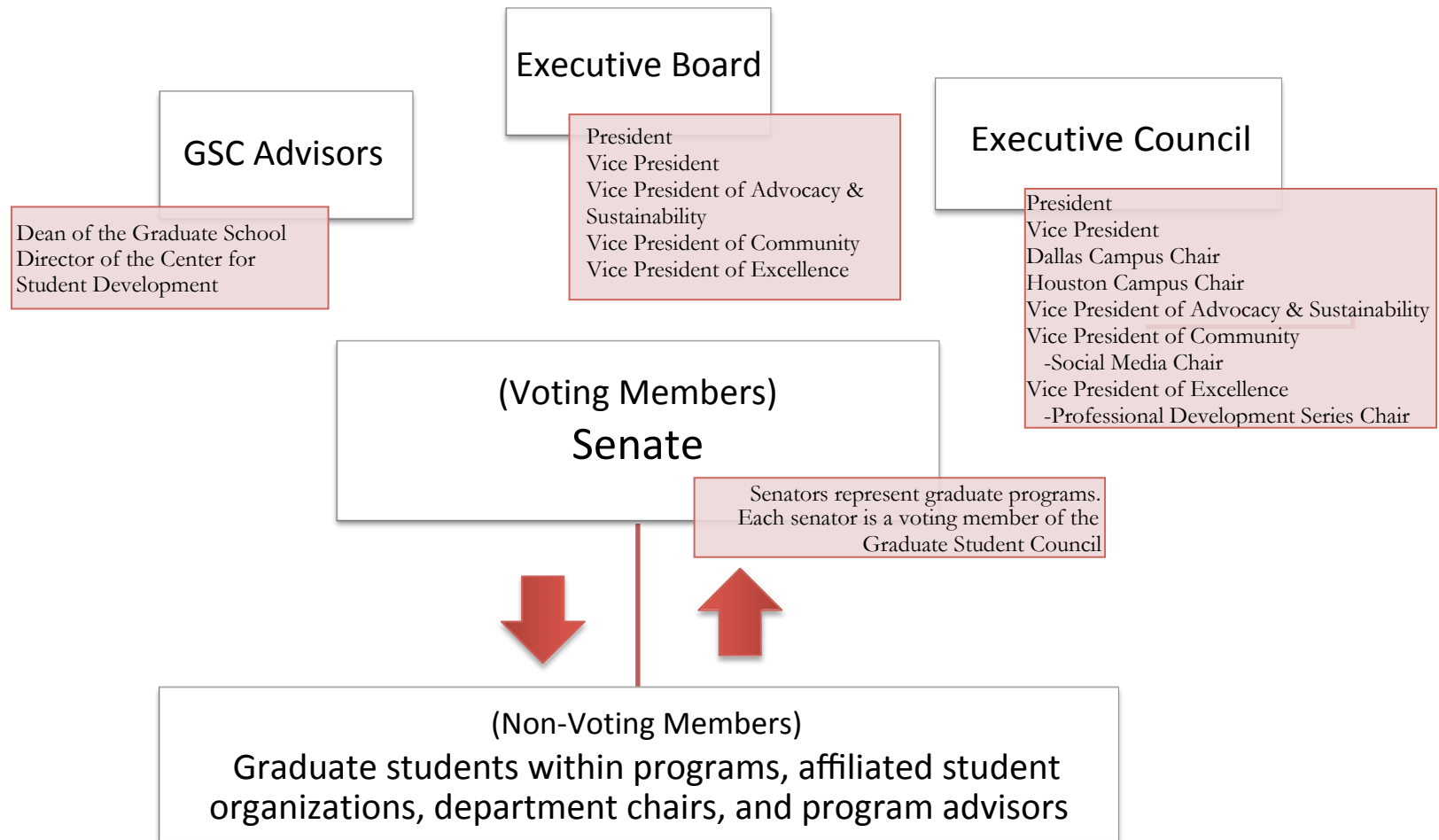


## Graduate Student Council of Texas Woman's University Organizational Chart



1. Senators are expected to attend all regularly scheduled meetings of the Graduate Student Council and to communicate the issues raised in Graduate Student Council meetings to their fellow students and program staff as well as communicating the concerns and opinions of their fellow students back to the Graduate Student Council.
2. As part of the responsibility to the graduate student body of TWU, senators are strongly encouraged to serve on committees when opportunities arise.
3. Senators will meet with key administration personnel throughout the academic school year: department chair, dean of college, and dean of graduate school