



TEXAS WOMAN'S UNIVERSITY

HOUSTON CAMPUS PRESIDENT



FALL 2023



Learn about a Million Dreams at TWU



THE OPPORTUNITY

Texas Woman’s University (TWU) invites applications and nominations for an innovative, experienced leader to serve as the Houston Campus President.

Now is a particularly exciting time. The university has achieved extraordinary accolades in academics, discovery and service. Texas Woman’s is embarking on an unprecedented comprehensive capital campaign, poised to significantly grow its healthcare programming; and has added an aviation school to address a glaring commercial pilot shortage. Just two years ago, the Texas Legislature established the Texas Woman’s University System as the first university system in the nation with a woman-focused mission. The Houston Campus President will provide strategic leadership of the campus. Reporting to the Texas Woman’s University System Chancellor, the Houston Campus President will work with students, faculty, staff, alumni, community members, business and industry leaders, legislators and policymakers for the advancement and growth of the campus. Operating in diverse communities, the presidents will engage with and be accessible to internal and external constituents.

INSIDE THIS PROSPECTUS

- About the University2
 - Mission & Vision2
 - Fast Facts3
 - Strategic Plan5
 - Student Life6
- About the Houston Campus.....7
 - Programs8
 - Research 11
- About the Position 12
 - The Position12
 - Qualifications13
 - Applications14



WE ARE PIONEERS

ABOUT TEXAS WOMAN'S

Founded in 1901 as a women's college, the university has grown its mission of serving marginalized populations in higher education during the past 120-plus years. For four consecutive years, *U.S. News & World Report* recognized TWU — a federally designated Hispanic-Serving Institution — as having one of the top five most ethnically diverse student bodies in the nation, and in 2023 it ranked the university among the nation's best for social mobility. Additionally, *Forbes* and *The Wall Street Journal* recognized the university as a top pick in 2023, and *The Wall Street Journal* also ranked the university 7th in the nation for overall student experience. In 2023, Texas Woman's earned the coveted Seal of *Excelencia*, a certification that demonstrates a university's commitment to accelerating Latino student success. Less than 1% of colleges and universities have earned this distinction.

The nation's largest woman-focused university system, TWU produces leaders in the fields of education, the arts, sciences, business, nursing and the health professions. Students have described their experience on the picturesque, flagship Denton campus as "a private feel at a public cost." It is the only public, general academic university in Texas to offer doctoral degrees in occupational therapy, physical therapy, dance and multicultural women's and gender studies. Men account for about 10% of the student population.

Since becoming a system in 2021, Texas Woman's plans to evolve its health sciences centers in Houston and Dallas to greater independence and autonomy. Denton, just north of the DFW area, is consistently named one of the nation's best college towns, and Dallas and Houston have world-class museums, performing art centers, entertainment districts and professional and collegiate sports venues. As a whole, the university has a \$1.8 billion annual economic impact on the state.

MISSION & VISION

Texas Woman's University cultivates engaged leaders and global citizens by leveraging its historical strengths in health, liberal arts and education as well as its standing as the nation's largest public university primarily for women. Committed to transformational learning, discovery and service in an inclusive environment that embraces diversity, Texas Woman's inspires excellence and a pioneering spirit.



LEADING THE WAY WITH A NATIONAL AWARD

The American Council on Education (ACE) recognized TWU with the 2023 ACE/Fidelity Investments Award for Institutional Transformation.

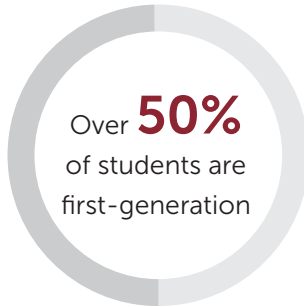
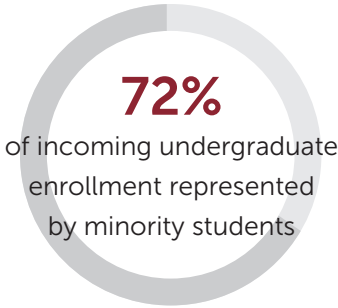
1st four-year institution in Texas to receive the award

A UNIVERSITY SYSTEM FOR ALL

#1 in Texas and #5 in nation for campus ethnic diversity (USNWR)

#1 in Texas for students with children (Intelligent.com)

#7 in the nation for best student experience (The Wall Street Journal)



Denton

12,615 Students

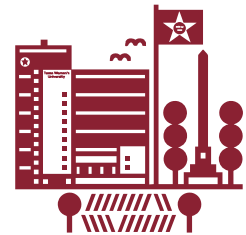
88% Female | 12% Male



Dallas

1,901 Students

91% Female | 9% Male



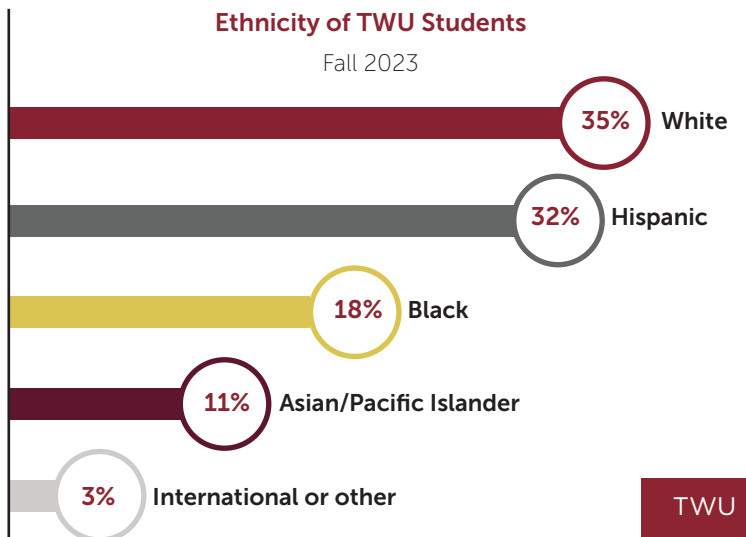
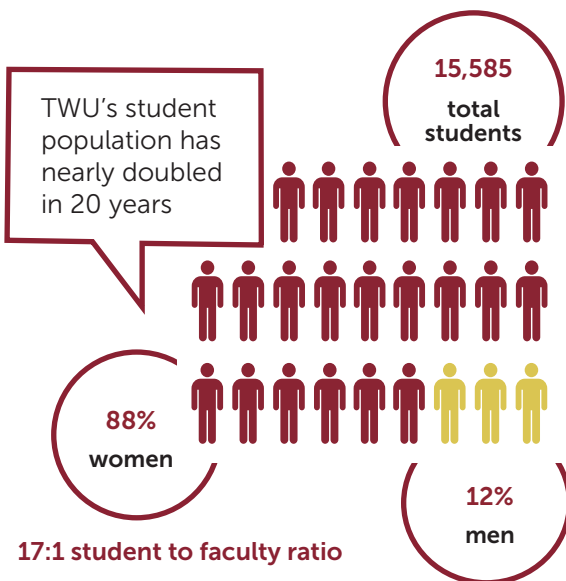
Houston

1,069 Students

87% Female | 13% Male

Nation's Largest
Woman-Focused University System

Earned the
Seal of Excelencia
making it a top university for Latino student success



HIGH RANK & DESIGNATIONS

Undergraduate nursing programs in Texas

(U.S. News & World Report)

No. 2 for economic mobility of all universities in North Texas

(Economic Mobility Index Rank by thirdway.org)

Top performers on social mobility in Texas

(U.S. News & World Report)

America's Top College 2023

(Forbes)

Online master's in education programs in Texas

(U.S. News & World Report)

Best U.S. Colleges

(The Wall Street Journal)

Best master's nursing schools in Texas

(U.S. News & World Report)

Carnegie-classified doctoral professional university

MAKING A DIFFERENCE

40%

of all Texas allied health doctoral degrees from 4-year public university (3-year average) are from TWU

17%

of all critically needed doctoral degrees in nursing in Texas (3-year average) are from TWU

80%

of TWU teachers are still teaching 10 years after graduation. Compared to Texas average of 50% of teachers who leave profession in 5 years or less.

A LIFELONG VALUE

Most Affordable

4-year institution in Texas
(College for all Texans)

\$0 Loan Debt

43.5% of May 2023 graduates earned a bachelor's degree debt-free

Annual Tuition

and fees for undergraduates are lower than the Texas university average

83%

of graduates employed or enrolled in Texas within one year of graduation

#1 in DFW

for graduate earnings vs. cost
(Dallas Business Journal)

48%

of undergraduate students transferred to TWU from another college/university, lowering overall cost of education

Momentum

WOMEN

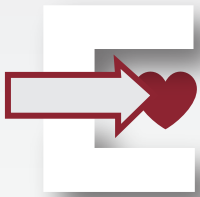
STRATEGIC PLAN 2028



LEVERAGE

the power of our systemness to serve our communities better

Established in 2021, Texas Woman's University System is the first and only university system in the United States with a woman-focused mission. This distinction gives us an opportunity to multiply the power of our contributions, scaling what works across our three campuses while at the same time tailoring it to a distinct mission in teaching, research and community outreach.



ELEVATE

student prosperity into the heart of all we do

Texas Woman's focuses on the whole person to help our students thrive. Moving beyond wealth, prosperity embodies a fullness of life. To best meet the needs of our students, we seek to prepare them to enter their chosen field, expand professional and social networks, promote positive physical and mental health, and plan for financial reality. With this foundation at the heart of all we do, students can build lives based on their individual needs, goals and circumstances.



AMPLIFY

the social impact aspects of our mission and brand

At Texas Woman's University, we are driven by our institutional mission to advance education and our historical strengths of empowering women and those traditionally marginalized. We envision a transformative approach to amplifying the social impact of our mission and brand. To accomplish this, we will prioritize documenting and boosting existing social impact efforts as well as supporting emerging ones. Through leveraging interdisciplinary and collaborative education, research and service opportunities, we will bridge academia and practice.



DOUBLE

the number of STEM opportunities

Women lead and inspire in science, technology, engineering and mathematics (STEM). Giving more women equal opportunities to pursue — and thrive in — STEM careers ensures a diverse and talented workforce, enhances women's economic security and prevents biases in STEM fields as well as the products and services they produce. By encouraging discovery in an inclusive environment, Texas Woman's seeks to double the existing STEM opportunities and increase the number of women entering the STEM workforce.



[Learn More About Momentum](#)



**#7 IN THE NATION FOR
STUDENT EXPERIENCE**
THE WALL STREET JOURNAL

STUDENT LIFE

STUDENT-FOCUSED APPROACH

Texas Woman's has created a learn-by-doing culture across all disciplines that encourages student engagement, fosters discovery and promotes leadership at all levels. Students are encouraged to step outside their comfort zones and discover talents and skills they might have otherwise overlooked. Through a myriad of activities, organizations, leadership opportunities and a dedicated network of support services, students take part in a transformational process that encourages them to be lifelong learners, passionately engaged with their communities, devoted to service and committed to a lifestyle of health and wellbeing.



QEP
Amplify Your Impact

TWU HOUSTON CAMPUS

TEXAS WOMAN'S UNIVERSITY IS IN THE BUSINESS OF HEALTH CARING

We want to reimagine the future and stretch the possibilities for a Houston university. The values and aspirations held by our Houston campus are strongly rooted in the community, providing a foundation for growth and transformation.

Home to the world's largest medical complex, Houston's health sector is a sure bet for growth. Since 1960, Texas Woman's has been numbered among the premier institutions that comprise the Texas Medical Center, training critical, in-demand healthcare professionals, healthcare administrators and business leaders while researching innovative treatments and breakthrough solutions.

In addition to an MBA and graduate-level Healthcare Administration programs, the Houston Center offers upper-level undergraduate, graduate and doctoral programs in Nursing, Occupational Therapy, Physical Therapy and Nutrition.





COLLEGE OF BUSINESS

What started as early classes in bookkeeping, the College of Business has grown into an AACSB accredited comprehensive program serving approximately 1,600 students. Spanning three campuses and online, faculty prepare students to meet the changing needs of business, industry, healthcare, government and education. TWU offers a personalized learning environment with small class sizes and a vibrant community.

PROGRAMS

Accounting

Healthcare Administration

Management & Marketing

Master of Business Administration (MBA)

Master of Healthcare Administration (MHA)

Dual MBA and MHA



**AACSB
ACCREDITED**

TWU is accredited by one of the world's leading associations of business schools. Less than 6% of business schools worldwide have earned this distinction.

#1

Master's in Healthcare Administration degree in nation
(Intelligent.com)

#30

of 55 best business management colleges in U.S.
(University HQ)

#29

of 60 best Texas MBA programs
(University HQ)

#10

of 27 top healthcare administration schools
(Best Value Schools)



COLLEGE OF HEALTH SCIENCES

TWU's Houston campus is home to three of the most highly-rated healthcare programs in the state — occupational therapy, physical therapy and nutrition and food sciences.

The School of Occupational Therapy faculty and students improve the lives of clients, serve in our communities and teach the next generation of practitioners. More than 4,000 alumni make significant contributions to the state and world through practice, education and research.

The School of Physical Therapy is a nationally recognized leader in professional and post-professional physical therapy education and repeatedly has ranked among the top PT schools in the nation. Students complete clinical education at approximately 400 sites across the U.S., where they provide the best care for patients and communities.

The Department of Nutrition and Food Sciences' innovative programs focus on experiential learning and research on the human body and nutrition. The highly accredited dietetic internship program provides the training and education required to become a Registered Dietitian Nutritionist and is affiliated with more than 60 prestigious rotation sites in the Denton/DFW Metroplex and greater Houston area.

PROGRAMS

Doctor of Occupational Therapy
(Entry-level)

Doctor of Philosophy in
Occupational Therapy

Doctor of Physical Therapy

Doctor of Philosophy in
Physical Therapy

DPT to PhD Fast Track

Master of Science in Exercise &
Sports Nutrition

Master of Science in Nutrition

PhD in Nutrition

Master's Dietetic Internship Program

School Nutrition Specialist Program

CERTIFICATES

Women's Health Physical Therapy



COLLEGE OF NURSING

The prestigious Nelda C. Stark College of Nursing—Houston Center offers multiple disciplines and features a rigorous core in clinical science and research. Approximately 3,400 undergraduate, graduate and pre-nursing students are currently enrolled (Fall 23) and more than 21,000 alumni live in Texas.

PROGRAMS

Bachelor of Science in Nursing (Final two years)

Master's of Science in Nursing — Nurse Practitioner tracks include:

- Family Nurse Practitioner
- Adult/Gerontology Acute Care
- Adult/Gerontology Primary Care
- Psych/Mental Health
- Pediatric NP
- Women's Health

Master's of Science in Nursing — Nursing Education

Doctor of Nursing Practice (DNP)

PhD in Nursing Science

DNP-to-PhD Bridge

CERTIFICATES

Graduate Certificate in Health Informatics

Post-Master's Certificates

- Nurse Practitioner
- Nursing Education

98%

Pass Rate on Certification Tests

2nd largest

Nursing PhD program in the nation
and 5th oldest

#27

of 774 Best Colleges for
Nursing in America
(Niche)

Top 20

in U.S. and **#3** in Texas
(Best Nursing Colleges)



Hear from one of our students

CENTER FOR GLOBAL NURSING

The Center for Global Nursing facilitates nursing students, faculty, alumni and community partners to become exceptional citizens in a global society. The Center Nursing has been promoting global health and nursing education since 2001, forming long-standing partnerships that make a difference for the healthcare workforce and world health.

Nursing scholars from around the world come to TWU College of Nursing to share their insights and enrich our global perspective. In addition, nurses living outside the United States are invited to Texas through our International Health Professions Nurse Mentor Program. The program pairs visiting nurses with faculty mentors to develop areas of interest or expertise and conduct research.

Global Partners

China

Indonesia

Korea

Peru

Spain

The Netherlands

United Kingdom

Vietnam

THE POSITION

KEY RESPONSIBILITIES OF THE HOUSTON CAMPUS PRESIDENT

- Serve as chief executive officer of the campus and working in collaboration with the provost and deans on the academic mission, and with vice presidents and vice chancellors on the overall campus growth
- Sit on the chancellor's cabinet and leadership teams, participating in strategy development and establishment of policies for the campus and system
- Spearhead strategic campus planning through evaluating a complex operation, using personnel, time, funds, and other resources for the accomplishment of long-term and short-term goals of the campus
- Establish and convey the vision, mission, and values of the campus in alignment with the TWU System
- Take a lead role in collaboration with University Advancement on fundraising
- Establish strong visibility, relationships, and voice in the community and beyond, as both the internal and external leader for the university
- Work to establish traditions, distinctiveness, and strengths of the campus
- Facilitate and advance partnerships that align with university goals
- Demonstrate support and respect for administrators, faculty, staff, and students in both internal and external settings
- Ensure financial vitality for the university through effective financial management and overall university growth strategies
- Establish effective mechanisms for soliciting input from faculty, staff and students into decision-making and establish shared governance processes, including collaboration in leadership and decision-making
- Represent or direct the representation of the campus in all areas of governmental and public affairs, including the legislature, the Texas Higher Education Coordinating Board, and other state, federal and local agencies
- Exercise such other executive powers as may be required for efficient campus management or as assigned by the chancellor
- Establish job standards for subordinate staff and effectively evaluating staff under charge. The performance evaluation is conducted through the performance evaluation system and in accordance with the University Policies & Procedures





**TWU takes pride
in providing students
with a whole person
educational experience**

EDUCATION

A degree from a regionally accredited institution of higher education and/or other equivalent significant leadership experience is required.

EXPERIENCE

Experience should include extensive proven fundraising success; legislative, professional, administrative and public work — preferably including some experience relating to an institution of higher education or professional school.

DESIRED PERSONAL & PROFESSIONAL CHARACTERISTICS & EXPERIENCE

- Visionary leader with a collaborative style and background of progressive leadership in higher education but willing to consider leadership in other industries
- Effective team-building skills, including the ability to inspire team members, with an understanding and appreciation of shared governance
- Proven communication and listening skills with the ability to connect, relate and engage internally and externally, including experience in advancement, community relations, legislative relations and partnership development
- Ability to make effective and persuasive speeches and presentations on controversial or complex topics to the board and the university community
- Ability to apply budgetary and fiscal planning techniques with financial constraints
- Ability to organize work effectively, conceptualize and prioritize objectives, and exercise independent judgment based on an understanding of organizational policies and activities
- Political savvy, business acumen, entrepreneurial/ pioneering spirit and collaborative problem-solver
- Known in the community, familiar with Texas Woman's in Houston, and able to advance the mission and brand of the university tailored to the campus and local community
- Appreciation for the research mission of a university and its impacts in the community and beyond
- Innovative and knowledgeable of trends in health care, business and academia
- Understanding of higher education in Texas
- High personal and professional standards
- Diversity-minded in all work



NOMINATIONS & EXPRESSIONS OF INTEREST

To express interest, you are requested to submit the following:

- A letter of interest stating how your experience is applicable to the position and its opportunities, responsibilities, and requirements expressed in the leadership profile
- A curriculum vitae or resume
- Five professional references with email addresses and telephone numbers (References will not be contacted without your prior authorization.)

While letters of interest alone may be accepted until the position is filled, interested parties are strongly encouraged to submit all their materials as soon as possible to assure full consideration. The university reserves the right to end or extend the expression of interest, application and nomination process at any time. Expressing interest is the first step in receiving consideration and does not make one an applicant for the position.

Materials should be submitted electronically to:
Christopher Johnson
cjohnson44@twu.edu

Nominations are also encouraged and should be directed to:
Christopher Johnson
cjohnson44@twu.edu



Equal Employment Opportunity Statement

Texas Woman's University, an AA/EEO employer, supports diversity. Men and women, and members of all racial and ethnic groups, are encouraged to apply. All offers of employment will be contingent on the candidate's ability to provide documents which establish proof of identity and eligibility to work in the United States. All positions at Texas Woman's University are deemed security sensitive requiring background checks and verification of all academic credentials.