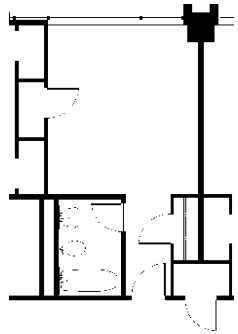


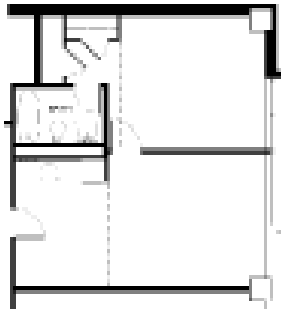
Typical Floor Plans



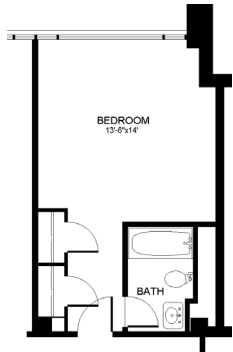
Guinn Hall
12' x 14'



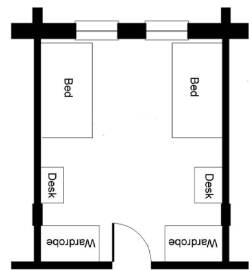
Guinn Hall Studio 1
dimensions



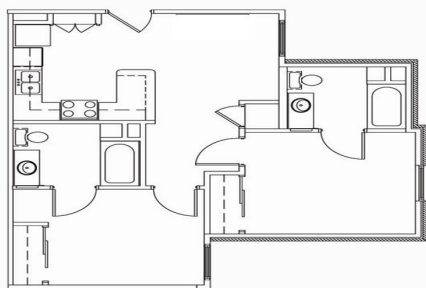
Guinn Hall Studio 2
dimensions



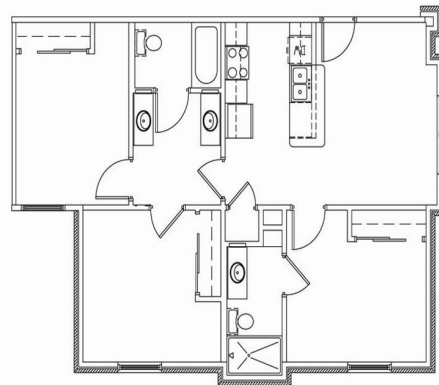
Stark Hall
13.6' x 14'



Jones Hall
12' x 15'



Lowry Wood Community
2 Bedroom
702 sq. ft.



Lowry Wood Community
3 Bedroom
916 sq. ft.

ROOMERS

A Guide to
Decorating
YOUR TWU ROOM



Roomers

Roomers is your guide to decorating your room. With a little money and a lot of imagination you can turn your room into a home. If you have a roommate, make plans together for your room. You can save money by sharing expenses to decorate your room.

Furnishings

Most double rooms are furnished with 2 movable standard twin beds, 2 desk chairs and 2 built in dressers, desks and closets. Private rooms are furnished with 1 twin bed, 1 desk chair and 2 built in dressers, desks and closets. (Rooms in Jones Hall have all movable furniture.) TWU provides a small refrigerator for each room. All furnishings in your room at check-in are your responsibility and are not to be removed. Keep in mind that when you move out, your room needs to be as empty as it was when you moved in.



The Walls

There are many ideas for wall decorations; plan what effect you wish to achieve with your roommate. Posters, wall hangings and photos can make your room feel like home. Be careful about overdoing your walls. The more you place on them, the smaller your room will feel. Items must be hung on the walls using WHITE plastitak only (nails, tacks, adhesive tape, masking tape, screw-in hooks, carpet tape, bolts and staples are not to be used). Another wall treatment may include bamboo or canvas decorative screens. We do not permit the use of fishnets, parachutes or sheets hung over or near lights since they are a fire hazard. Vents, wall sockets and lights are not to be covered.

Flooring

Change the appearance and lower the noise level in your room by laying a piece of carpet. Carpet can be wall-to-wall or an area rug. Do not glue, tape or pack the carpet to the floor; simply lay it flat. Remember you will have to take it with you when you leave.

Windows

The windows in each room have mini-blinds. Additional window treatments may be desired. We suggest using spring-loaded suspension rods.

Lights

Lighting can really set the mood in your room. For special effects, you may want to "spotlight" plants, baskets of a favorite picture. There are many great clip-on and floor lamps available in local stores.



Bookshelves

For those of you who need to have a little more space, we suggest you purchase colorful plastic crates. They are great to pack in and stack nicely. Span with 2'x4' pieces of lumber to make a great wall unit (concrete blocks and/or bricks are not allowed). We do not encourage the use of your window ledge as a shelf.

Pillows/ Bolsters

Pillows and bolsters are great for adding a splash of color as well as adding comfort. King-size pillows are great to stretch out on and can be used to create additional seating.



Aquariums & Fish Bowls

Since fish are the only pets we allow in the halls, some students bring aquariums and fish bowls. If you've never had a fish, start small with a goldfish or beta. Remember that these fish must go home with you when you leave during vacation periods.



Knick-Knacks

Plan to bring reminders of home with you- your teddy bear collection, yearbook, pictures, posters, etc. Remember, you will be sharing a room with someone else, so don't bring everything you own.

Baskets

Baskets are great for storing items. They will also add "pizzazz" to a room for a very low cost. Just use ribbons to make them match your decor.

Plants

Nothing makes a room feel like home more than plants. Plants are inexpensive and beneficial. You don't have to have a green thumb to have plants. There are plenty of low maintenance plants such as ivy, ferns and airplane plants to name a few. Just feed and water your plants and they can last for years! If you have a brown thumb or don't want the upkeep purchase silk plants. They'll always look great!



Suggestions on What to Bring:

Organization Counts

Desk Set- pens, pencils, clips, etc.
Pencil sharpener
Clock Radio
Dictionary/ Thesaurus Set
Address book

Bare Necessities

Personal Grooming Items
Towels- bath and wash cloths
Shower Curtain (unless you reside in Jones Hall)

Storage Needs

Hangers for clothing
Under the bed storage

Snack Time

Plastic Bowls/ Dishes/ Mugs
Popcorn poppers (air)



Stapler/ Staples/ Scissors
Stationary/ Stamps/ Envelopes
Broom/ Dust mop/ Cleaning products
Computer/ Calculator
Telephone & Answering machine

First Aid Kit/ thermometer
Toilet Paper

Small stackable crates

Silverware
Coffee Makers



**These are the only electric kitchen appliances allowed in the residence hall rooms. They must not have exposed heating elements.

*Please DO NOT bring any of the following: microwave, deep fryer, toaster/ oven, frying pan, space heater, electric skillet, crick-pot, George Forman type grills, of any open coiled electrical or heating appliance, bar-b-que grills or smokers.

*There are microwaves for snack preparation located in the kitchenette areas in each residence hall.

The Dream Scene

Comforter and/or blanket
Standard size twin sheets
Standard size double sheets (LWC only)



Pillow(s)/ pillow cases
Quilted mattress pad or cover

Laundry Time

Laundry bag or basket
Detergent/ Fabric softener

Lingerie bag
Ironing board and Iron

Things Most Overlooked

Sewing Kit
Bed lamp or Clip-on light
Flashlight & batteries
Umbrella

Key chain
Wastepaper basket
Lock box (for valuables)
Fan



Powerstrip with built-in circuit breaker

Items NOT to Bring

Concrete blocks or bricks
Pets
Halogen Lamps
Space heaters

Cooking appliances
Candles/ Incense
Multi- plug converters